



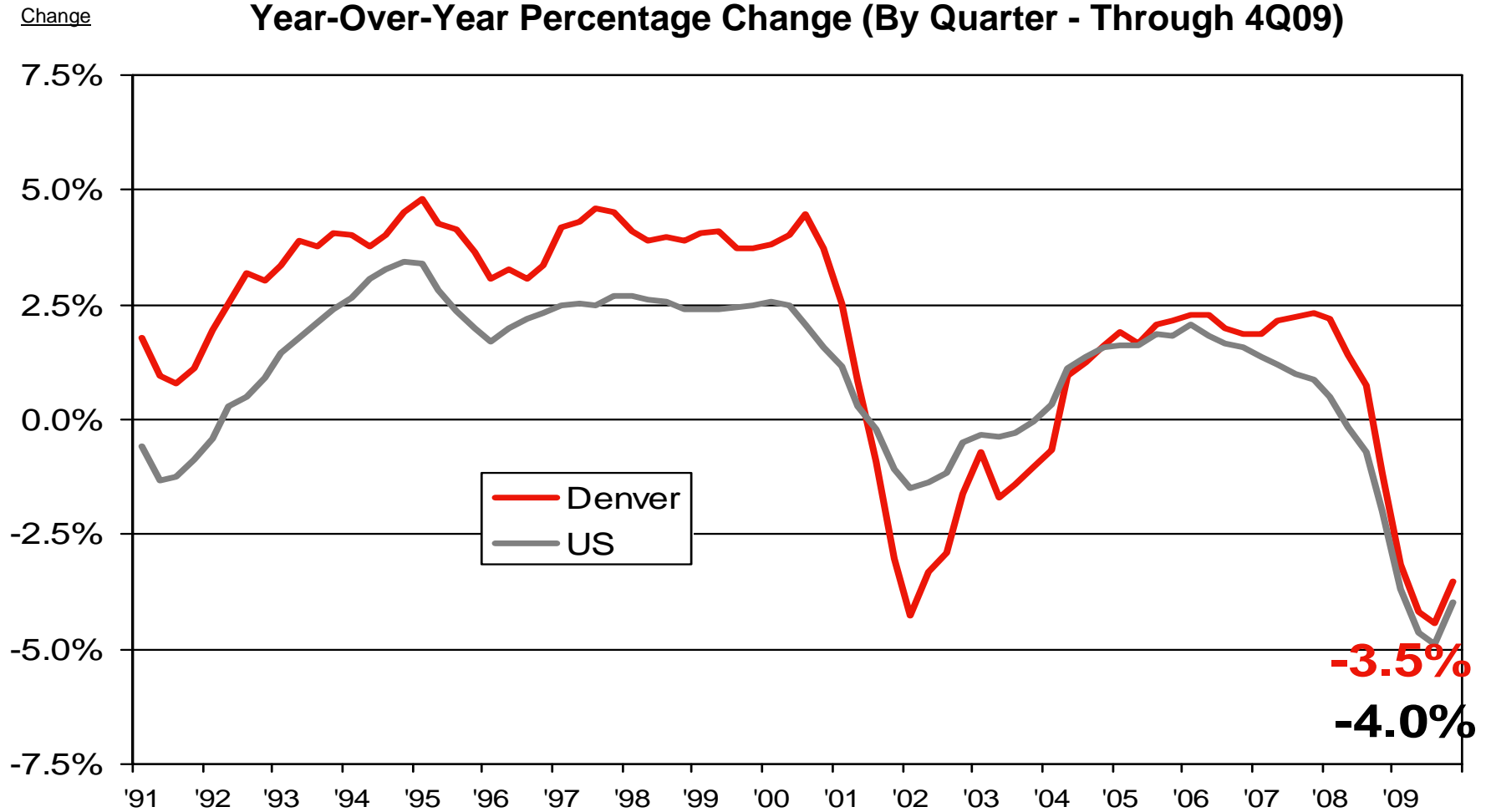
**CUSHMAN &  
WAKEFIELD**®  
Global Real Estate Solutions™



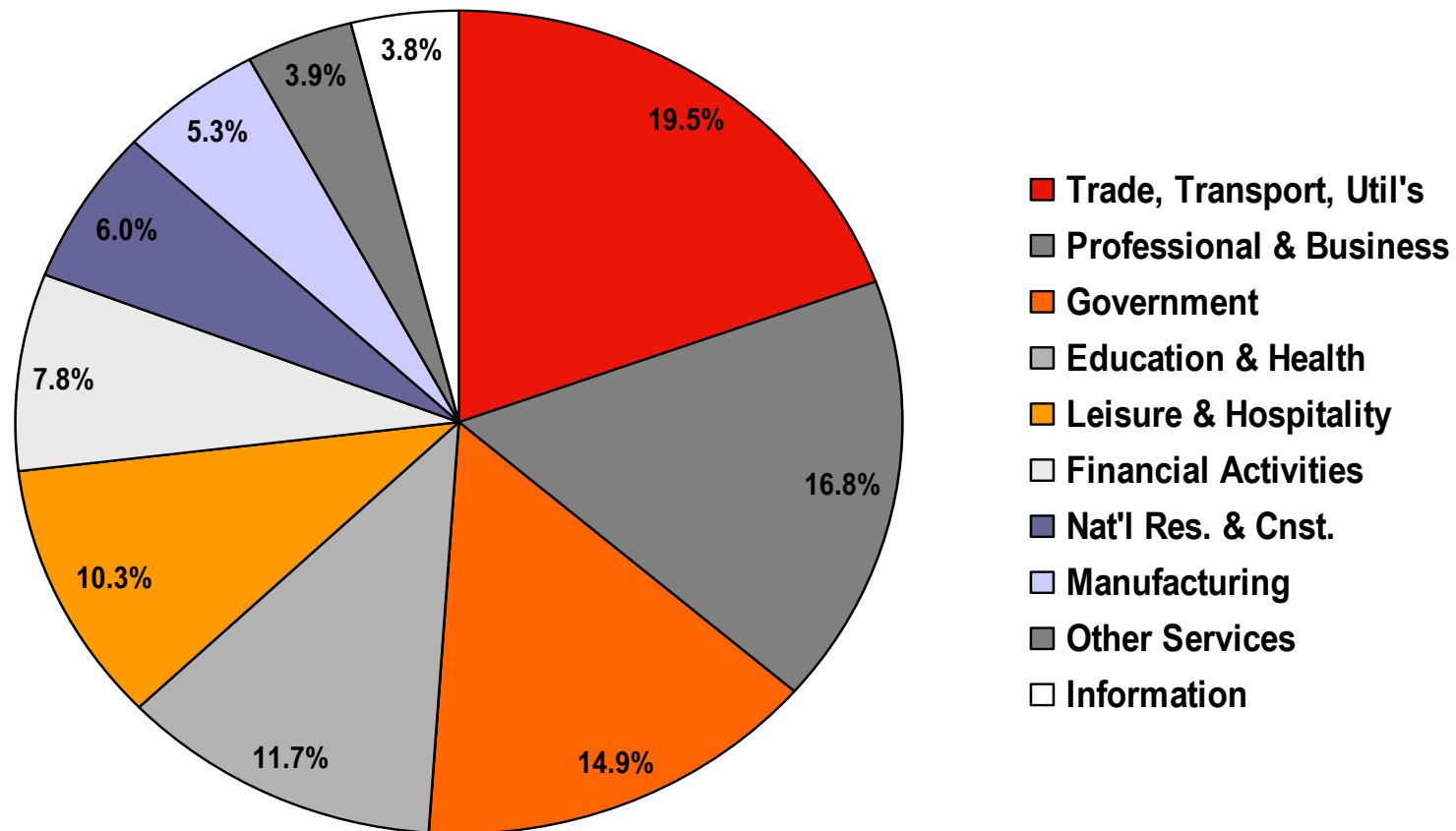
**CUSHMAN &  
WAKEFIELD**®

## Denver vs. U.S. Employment

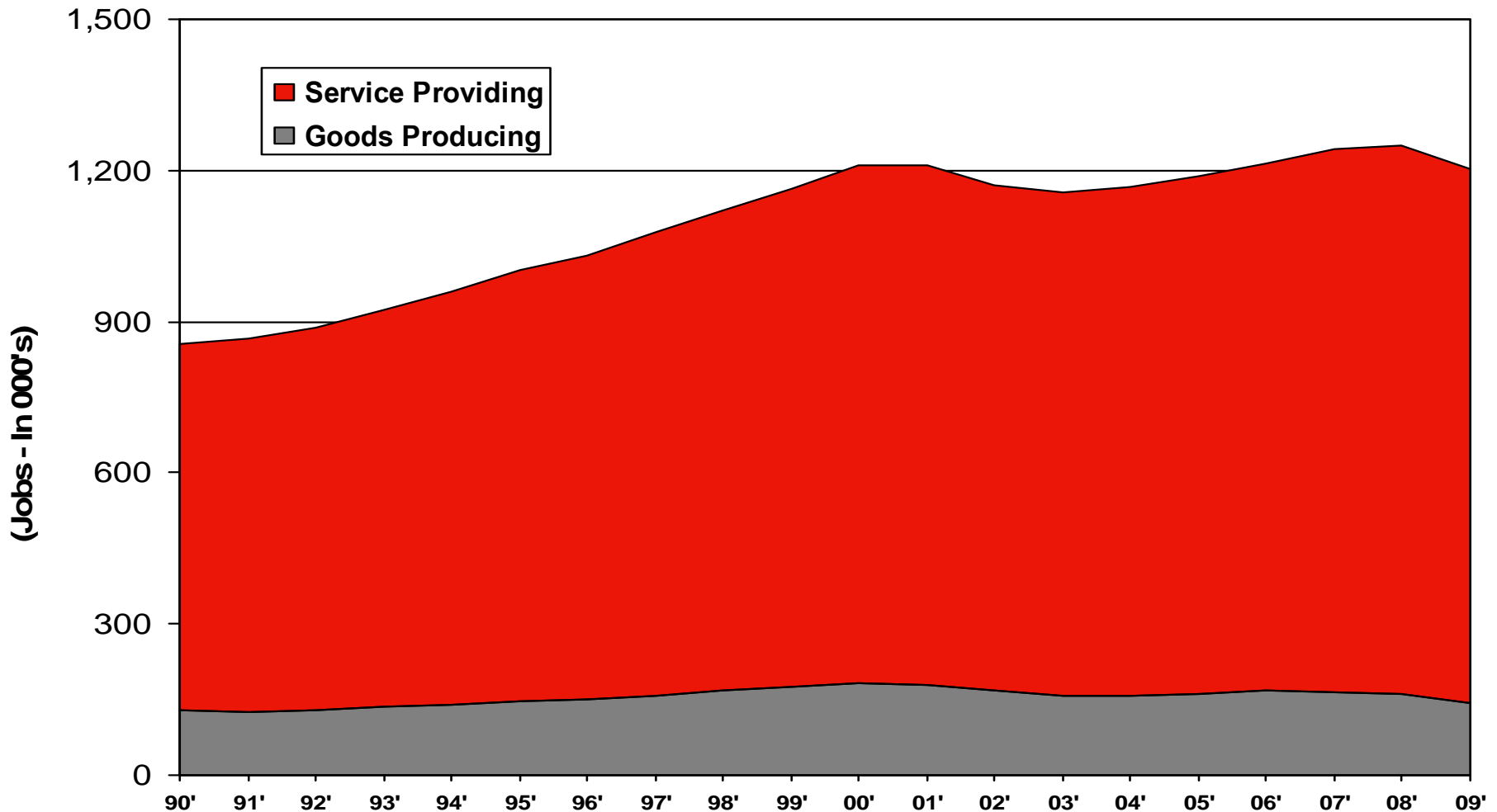
Year-Over-Year Percentage Change (By Quarter - Through 4Q09)



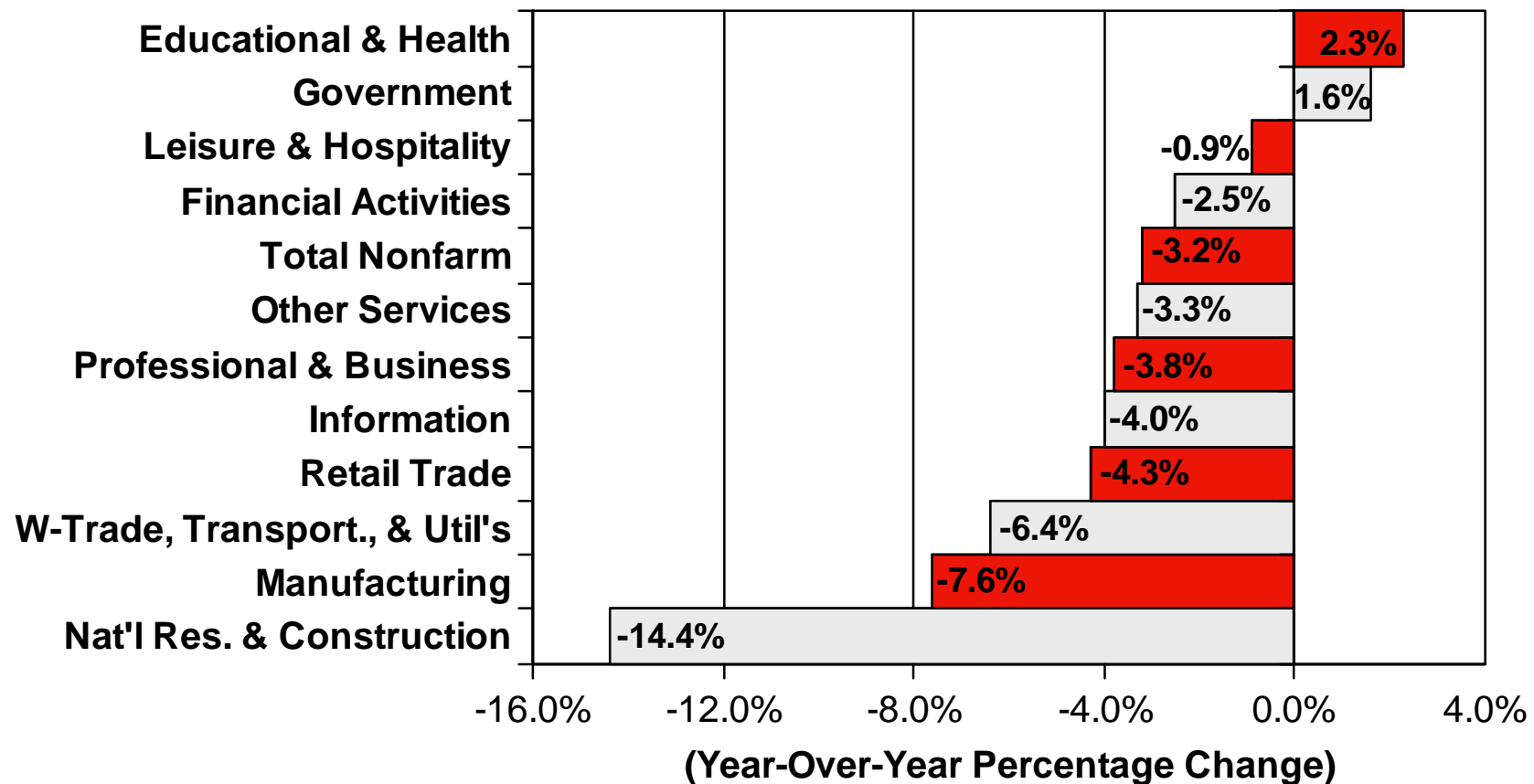
## Denver-Aurora MSA Nonfarm Employment Share of Total – By Sector (December 2009)



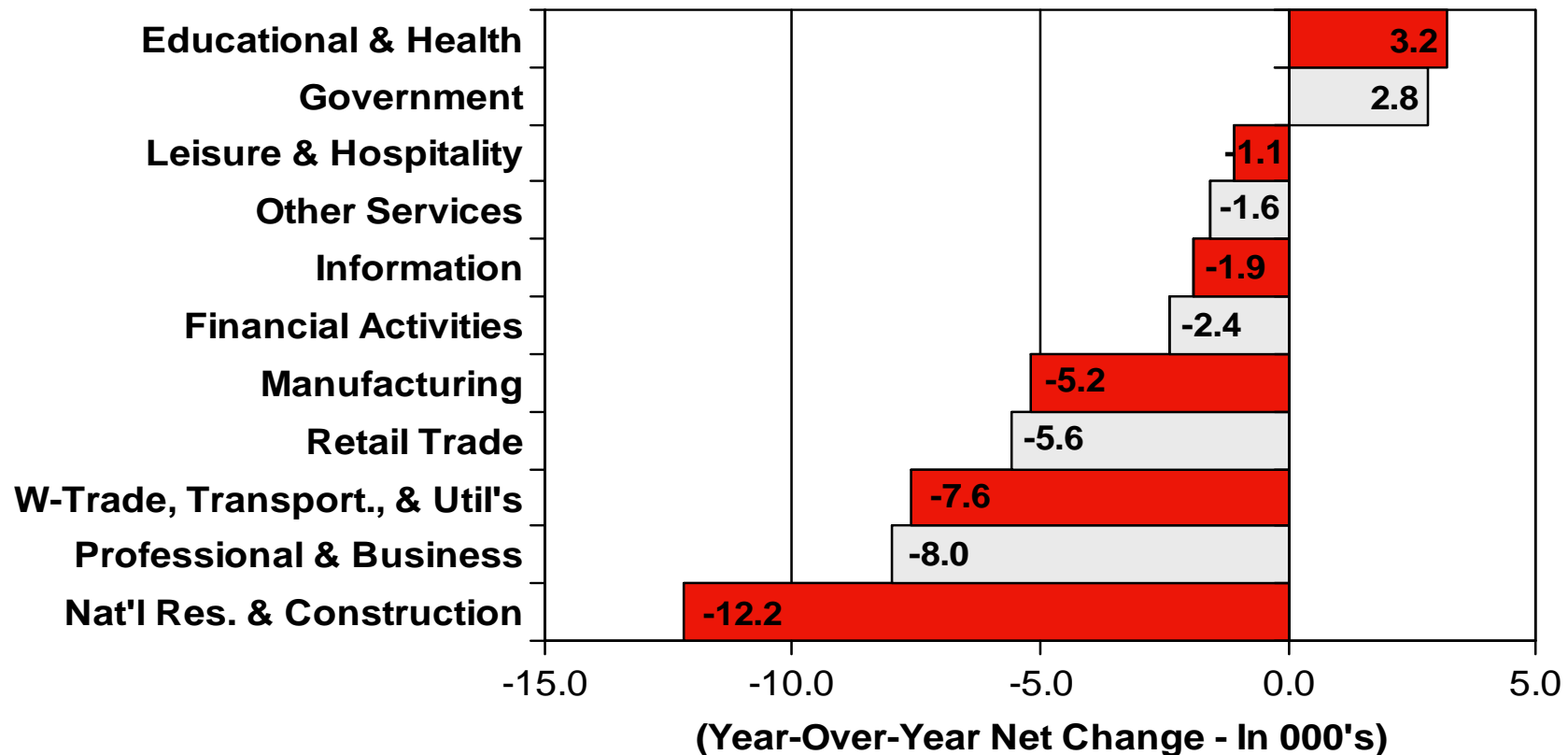
## Denver-Aurora MSA Nonfarm Employment



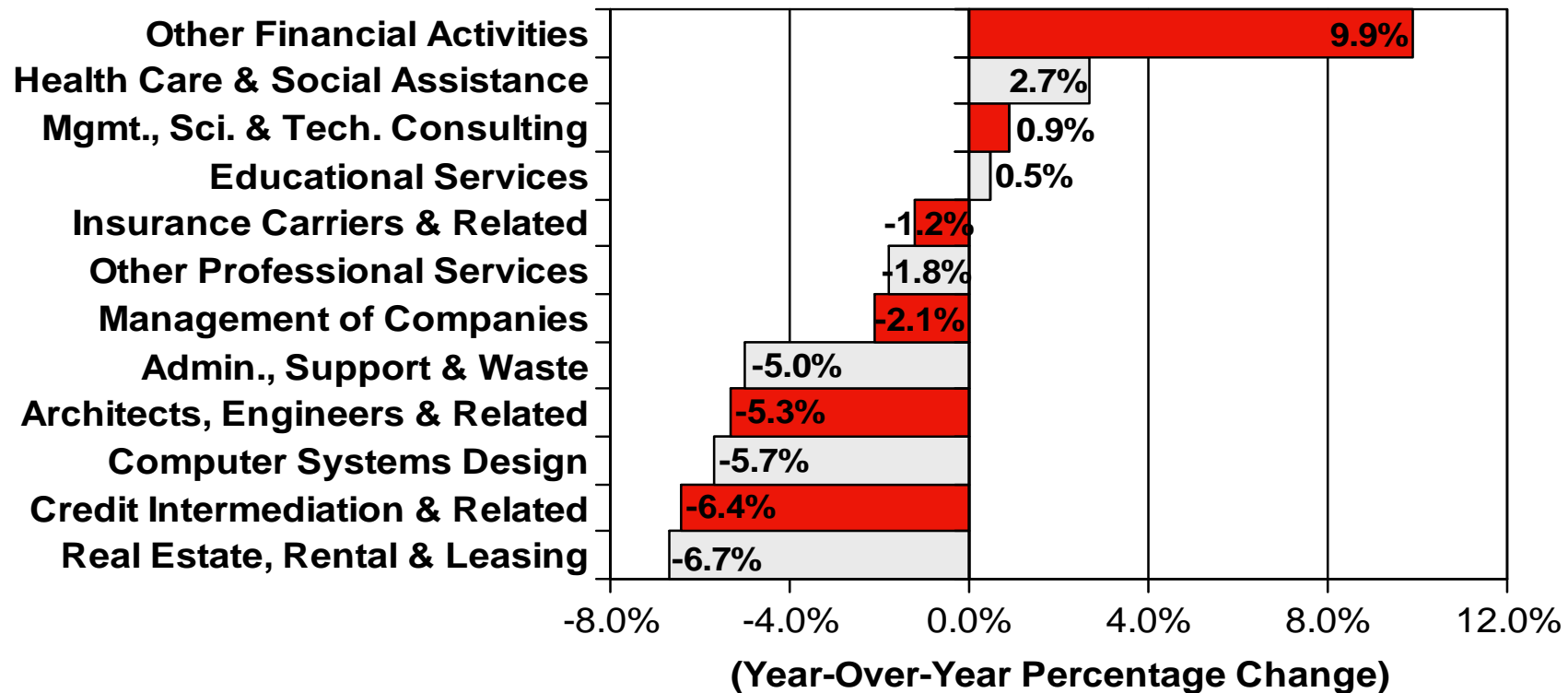
## Denver-Aurora MSA Nonfarm Employment Growth Rates - Major Sectors (December 2009)



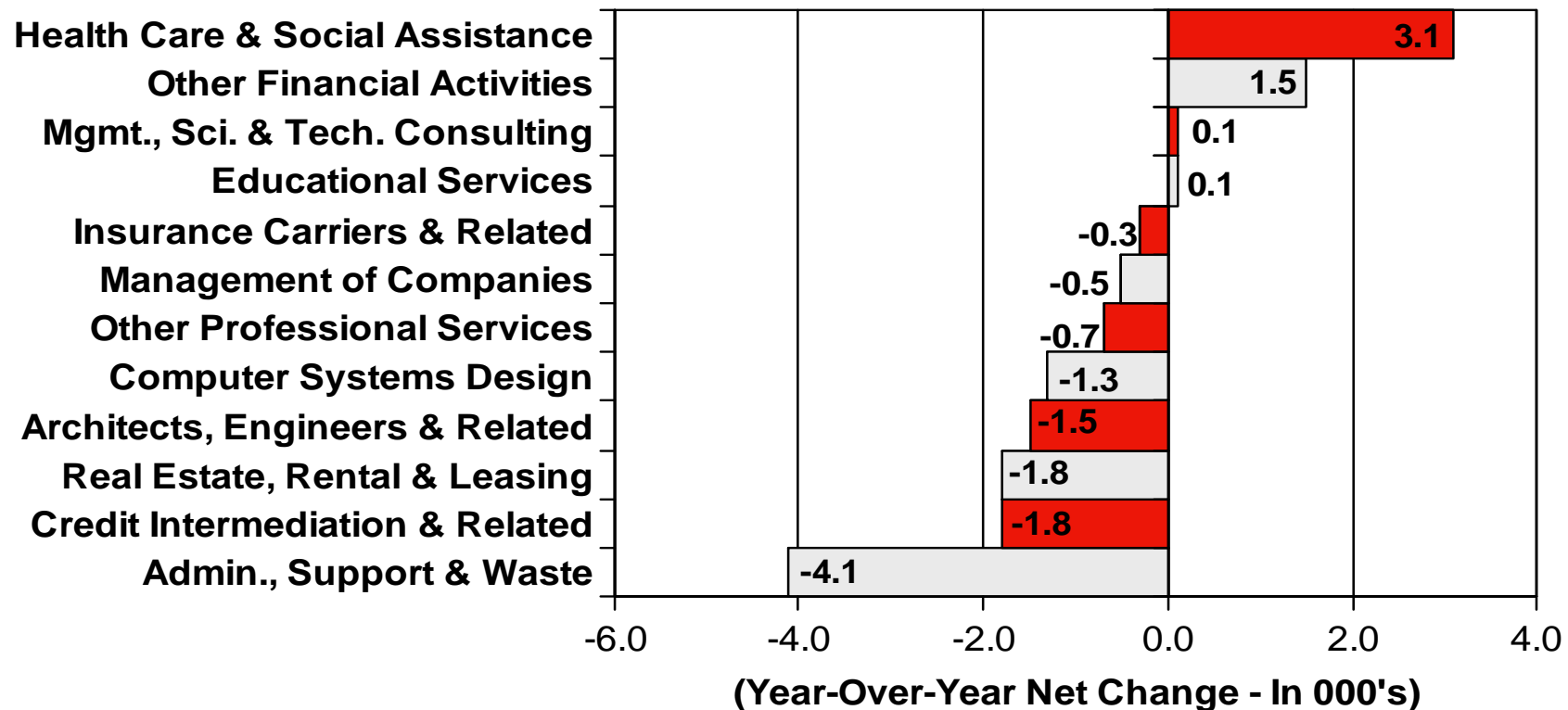
## Denver-Aurora MSA Nonfarm Employment Job Gains - Major Sectors (December 2009)



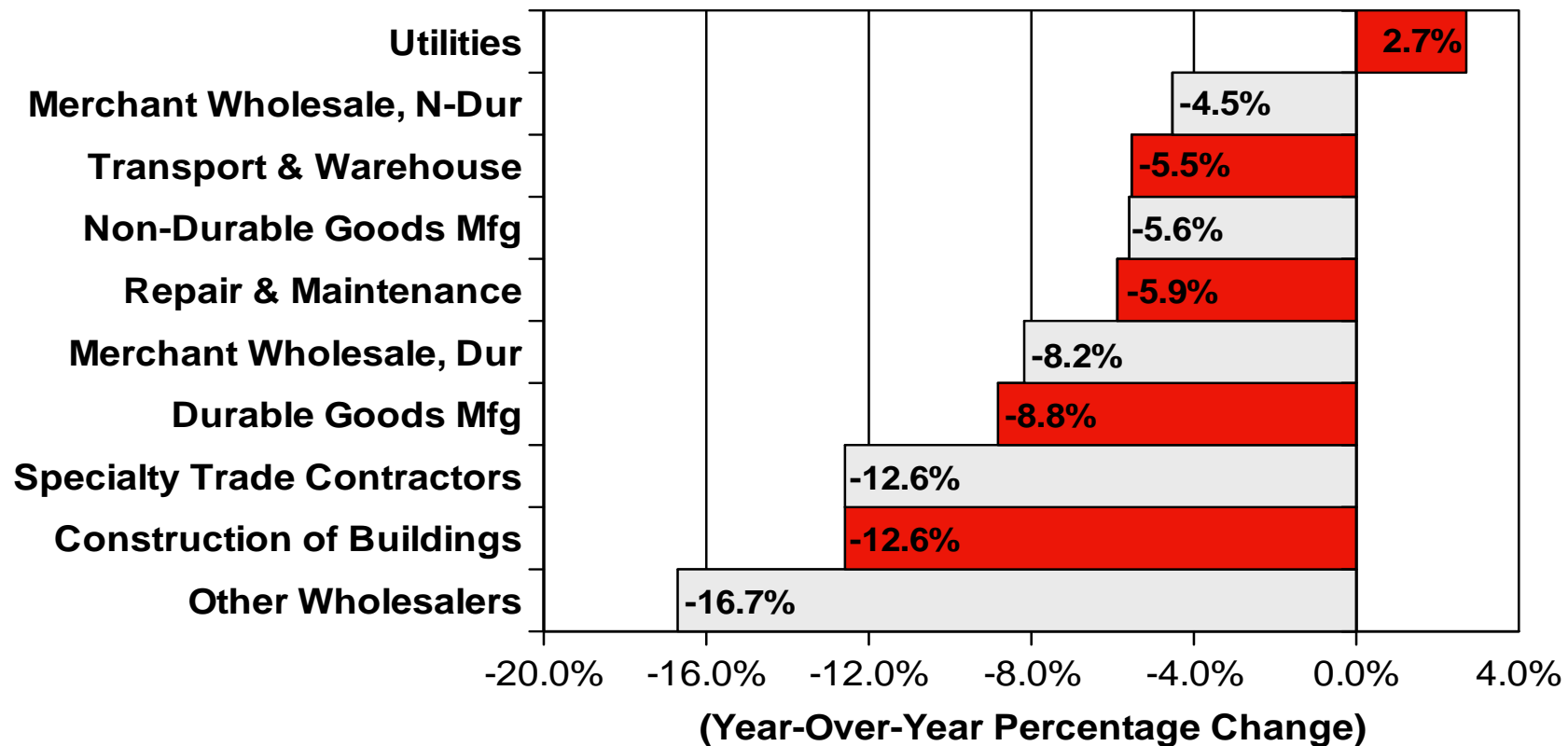
## Denver-Aurora MSA Nonfarm Employment Growth Rates – Office Sectors (December 2009)



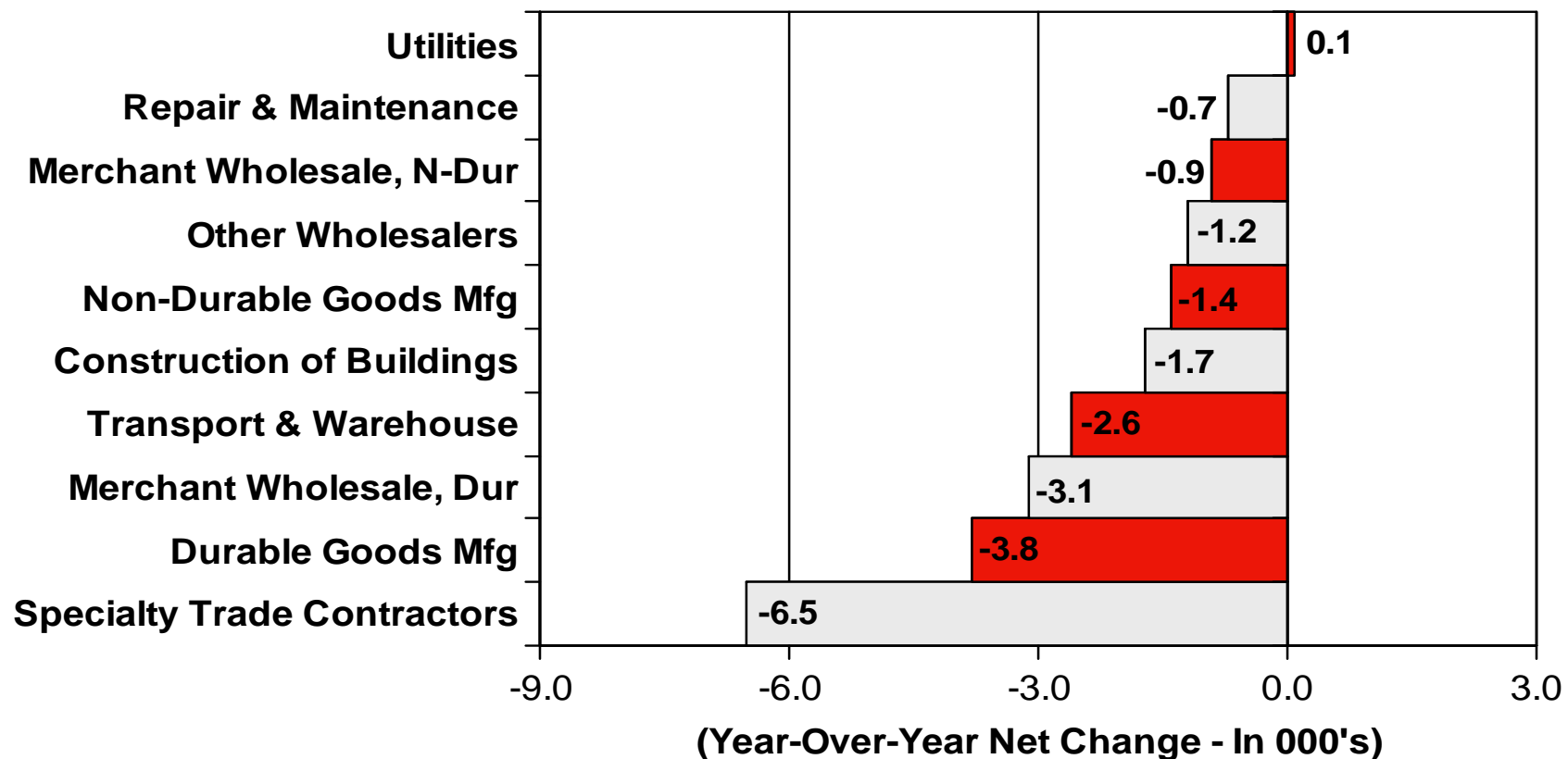
## Denver-Aurora MSA Nonfarm Employment Job Gains - Office Sectors (December 2009)



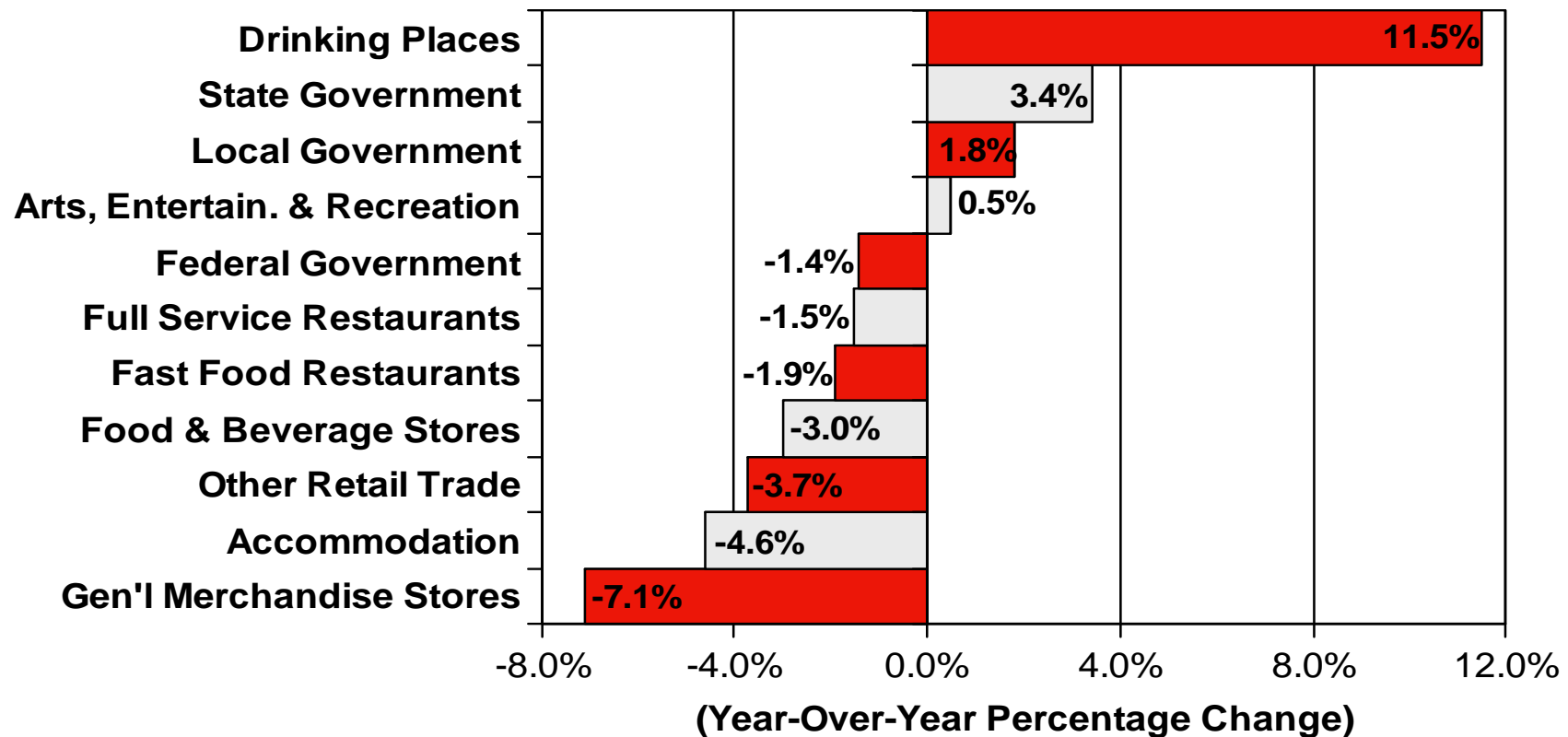
## Denver-Aurora MSA Nonfarm Employment Growth Rates - Industrial Sectors (December 2009)



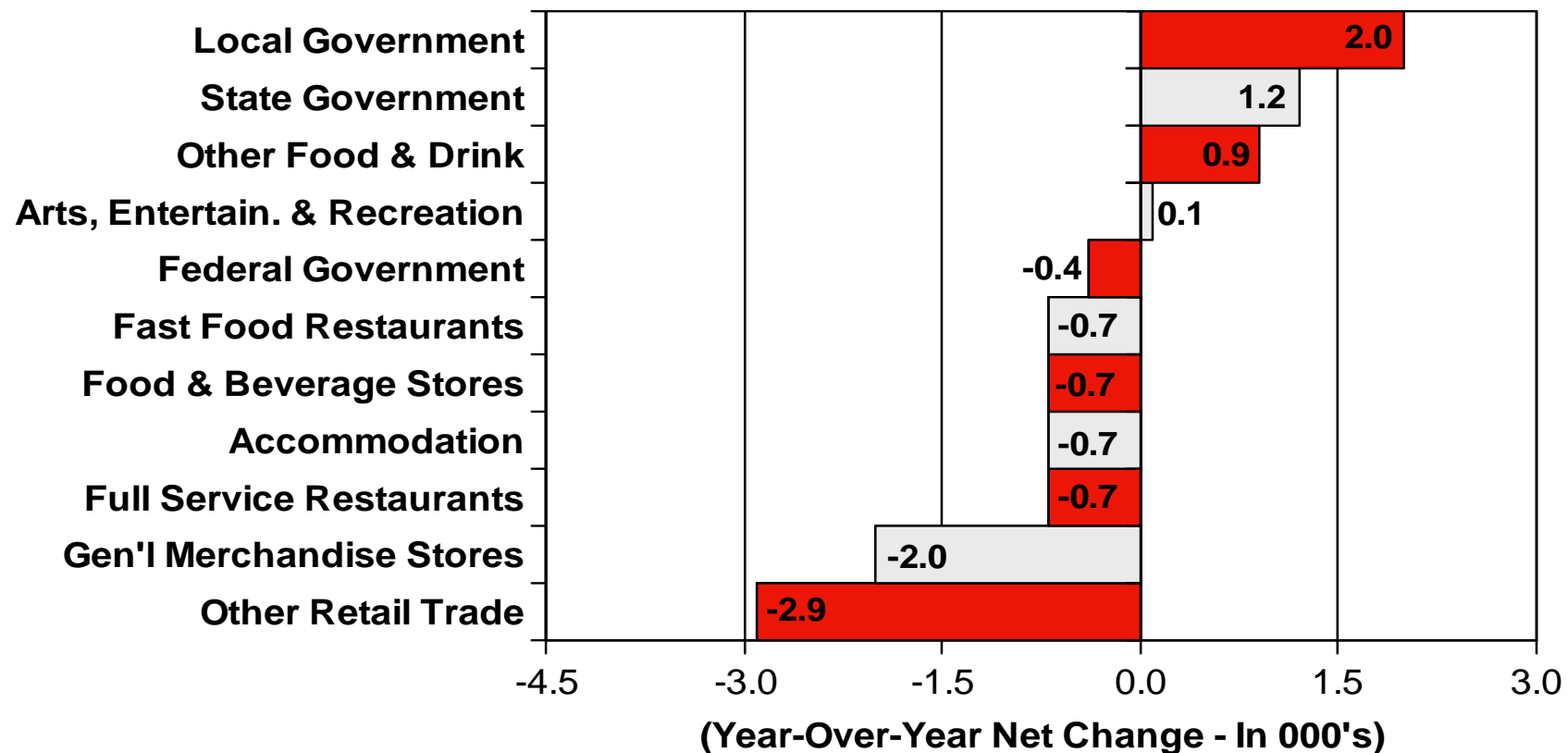
## Denver-Aurora MSA Nonfarm Employment Job Gains - Industrial Sectors (December 2009)



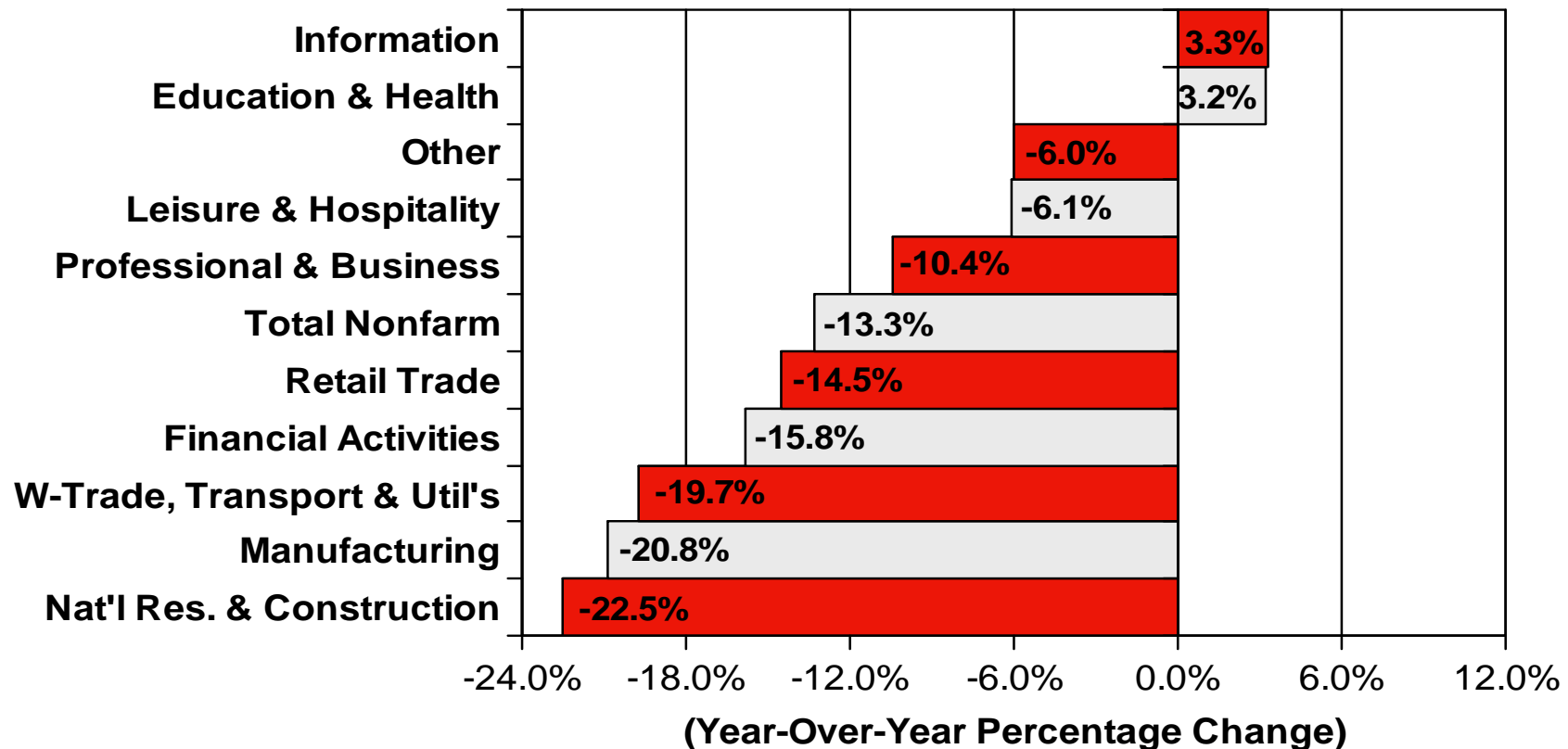
## Denver-Aurora MSA Nonfarm Employment Growth Rates – Consumer & Public Sectors (December 2009)



## Denver-Aurora MSA Nonfarm Employment Job Gains - Consumer & Public Sectors (December 2009)

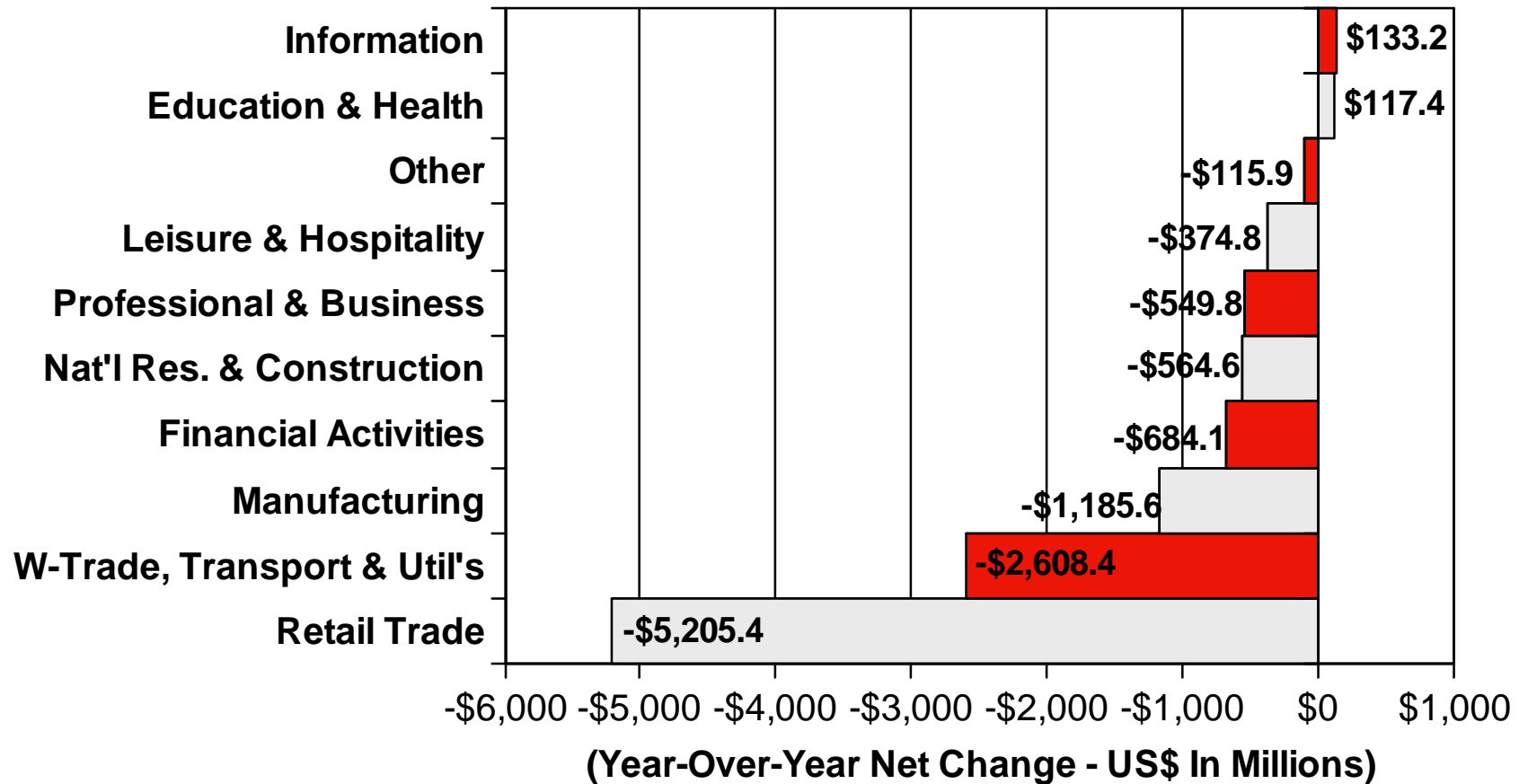


## Denver-Aurora MSA Nonfarm Sales Growth Rates - Major Sectors (12 Months Ending November 2009)

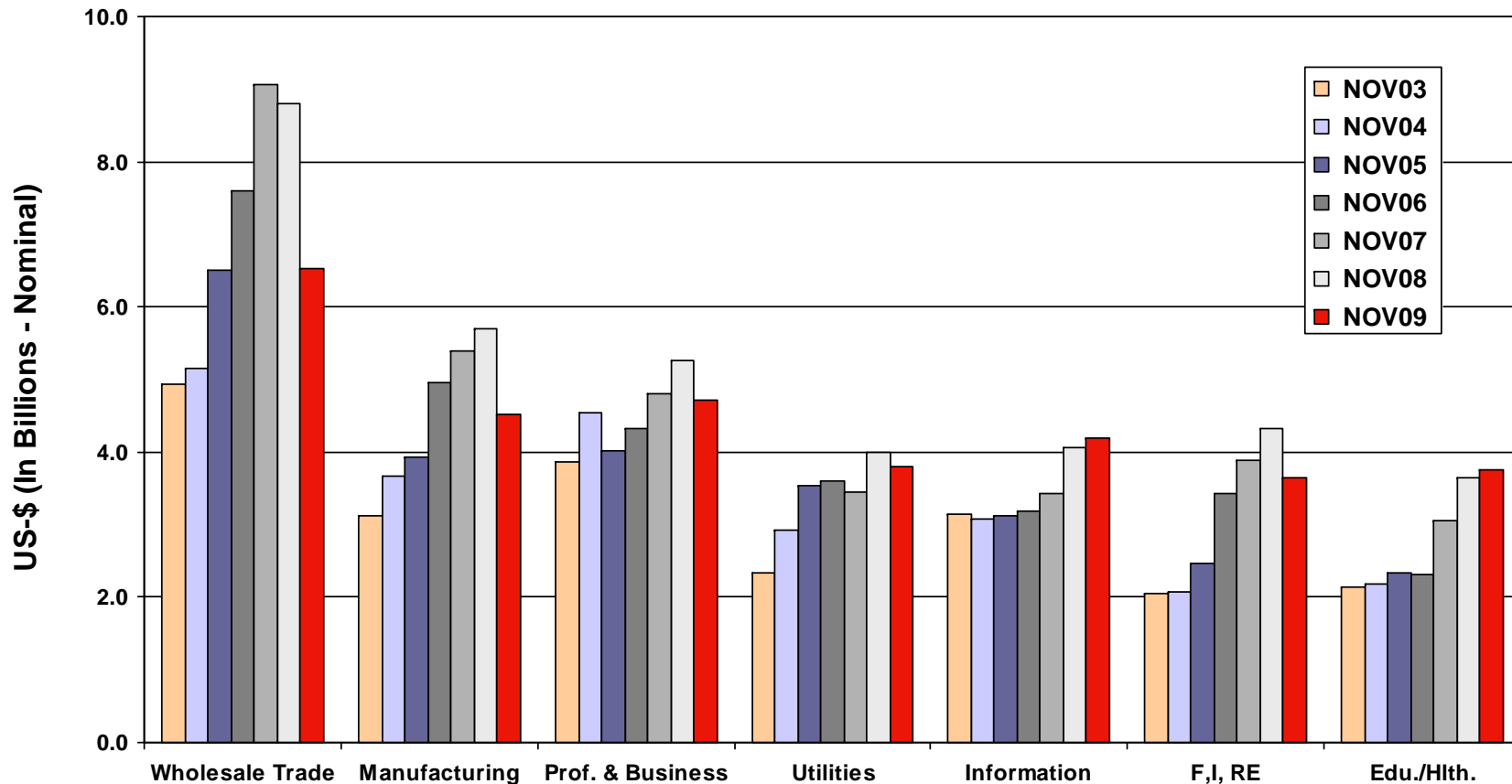


## Denver-Aurora MSA Nonfarm Sales

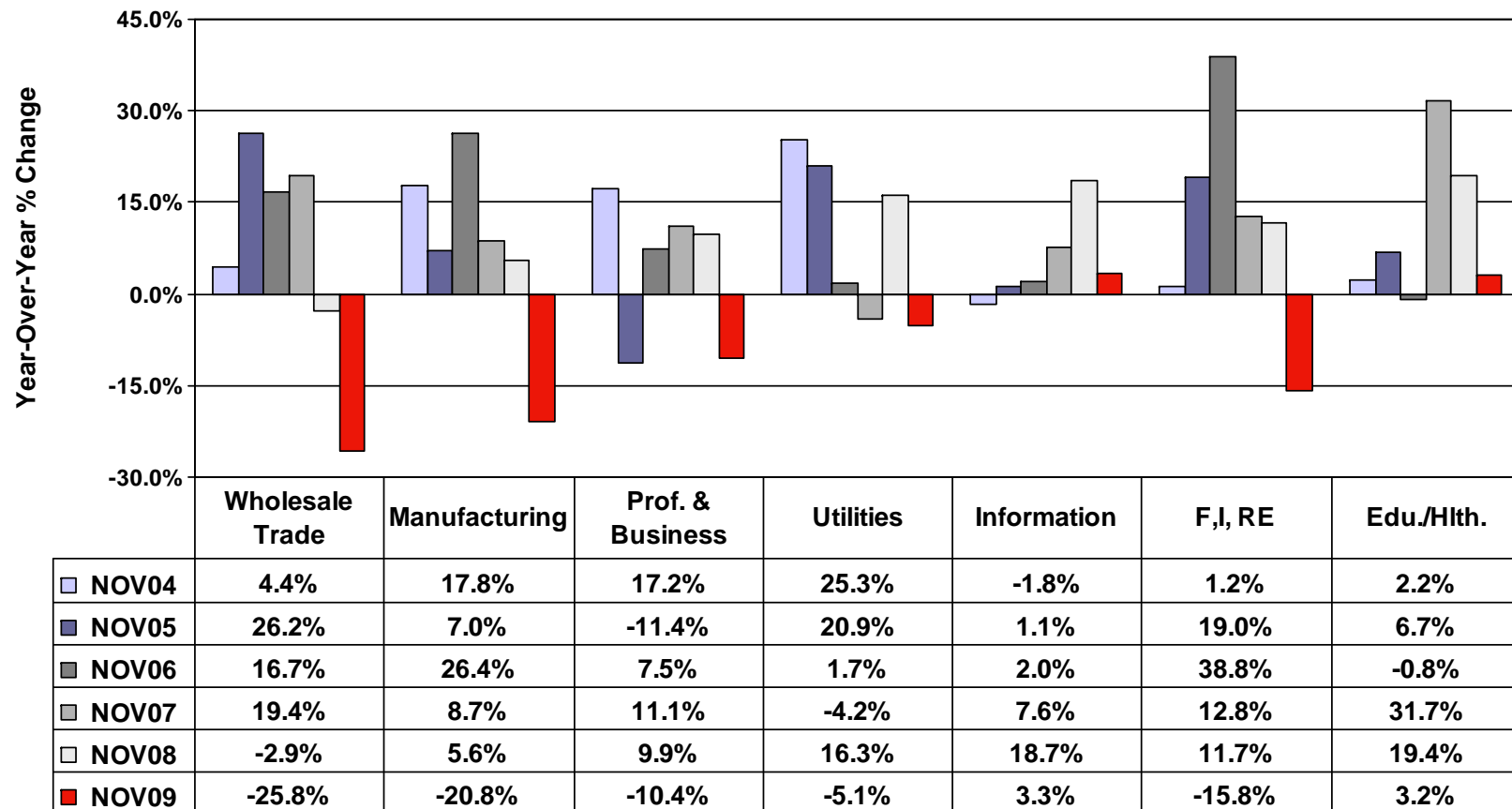
Revenue Gains - Major Industries (12 Months Ending November 2009)



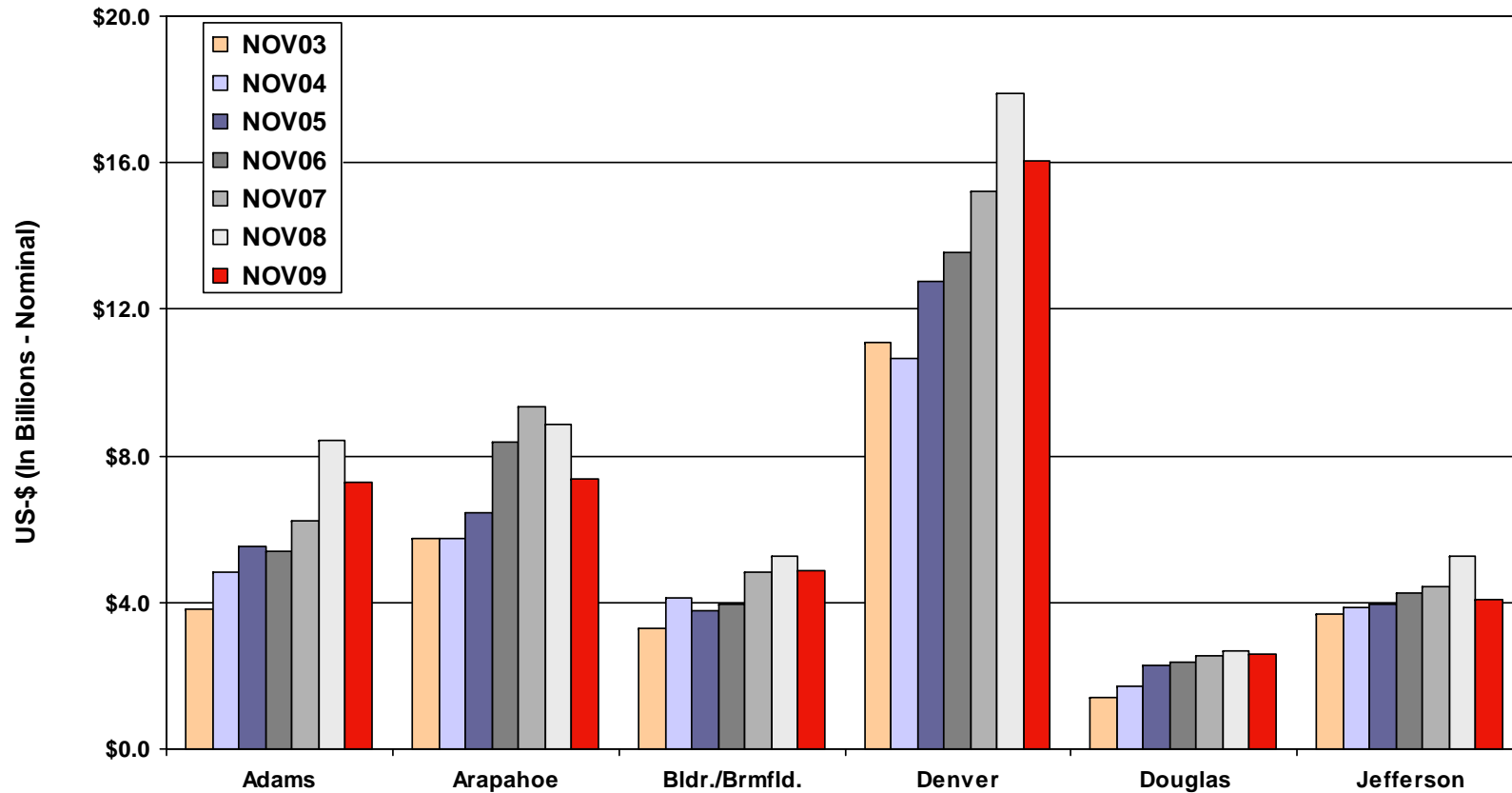
## Denver-Aurora MSA Nonfarm Industry Sales Select Industries (12 Month Periods Ending November)



## Denver-Aurora MSA Nonfarm Industry Sales Growth Rates (12 Month Periods Ending November)

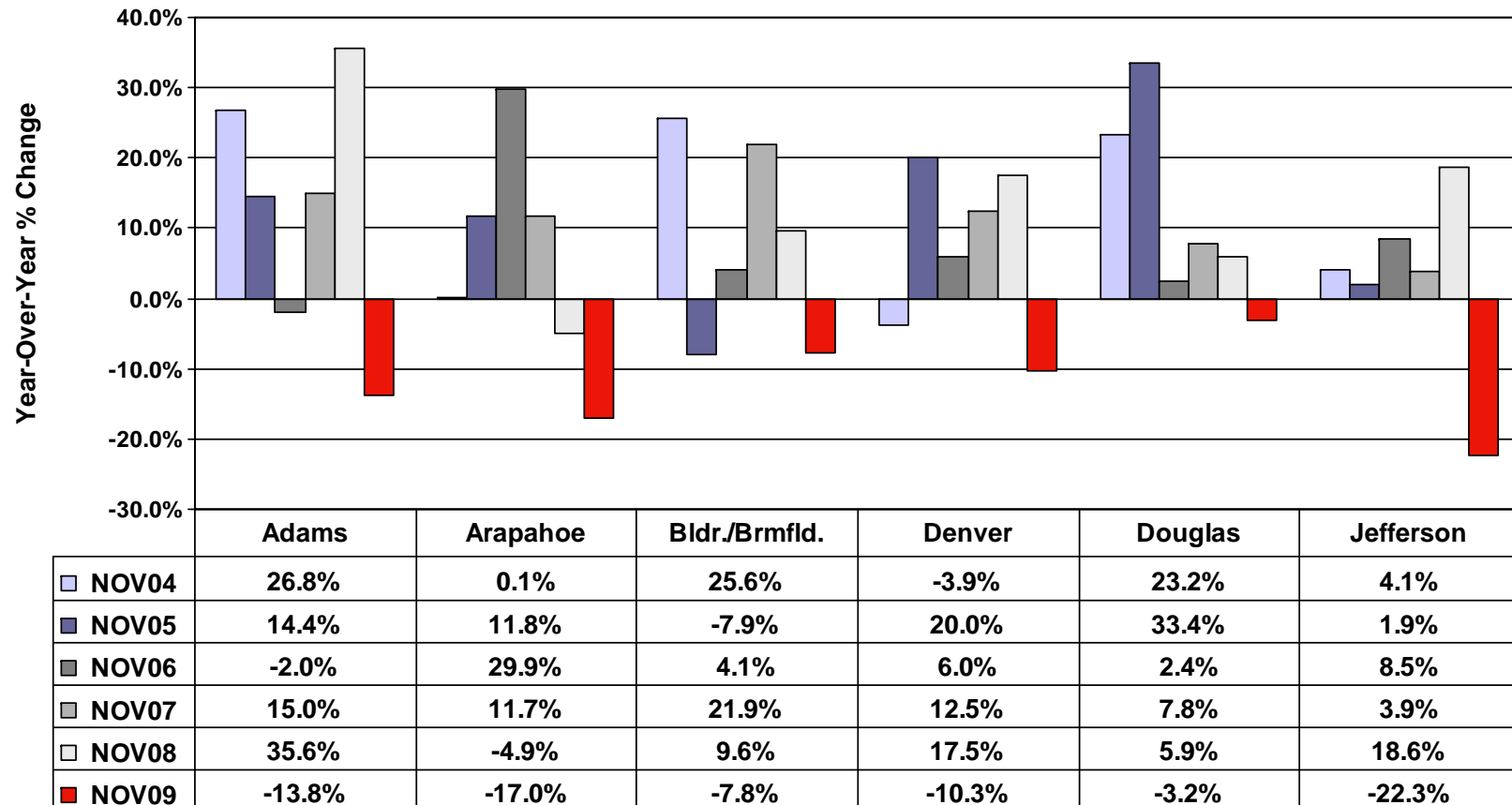


## Nonfarm Industry Sales By County (12 Month Periods Ending November – Excluding Retail)

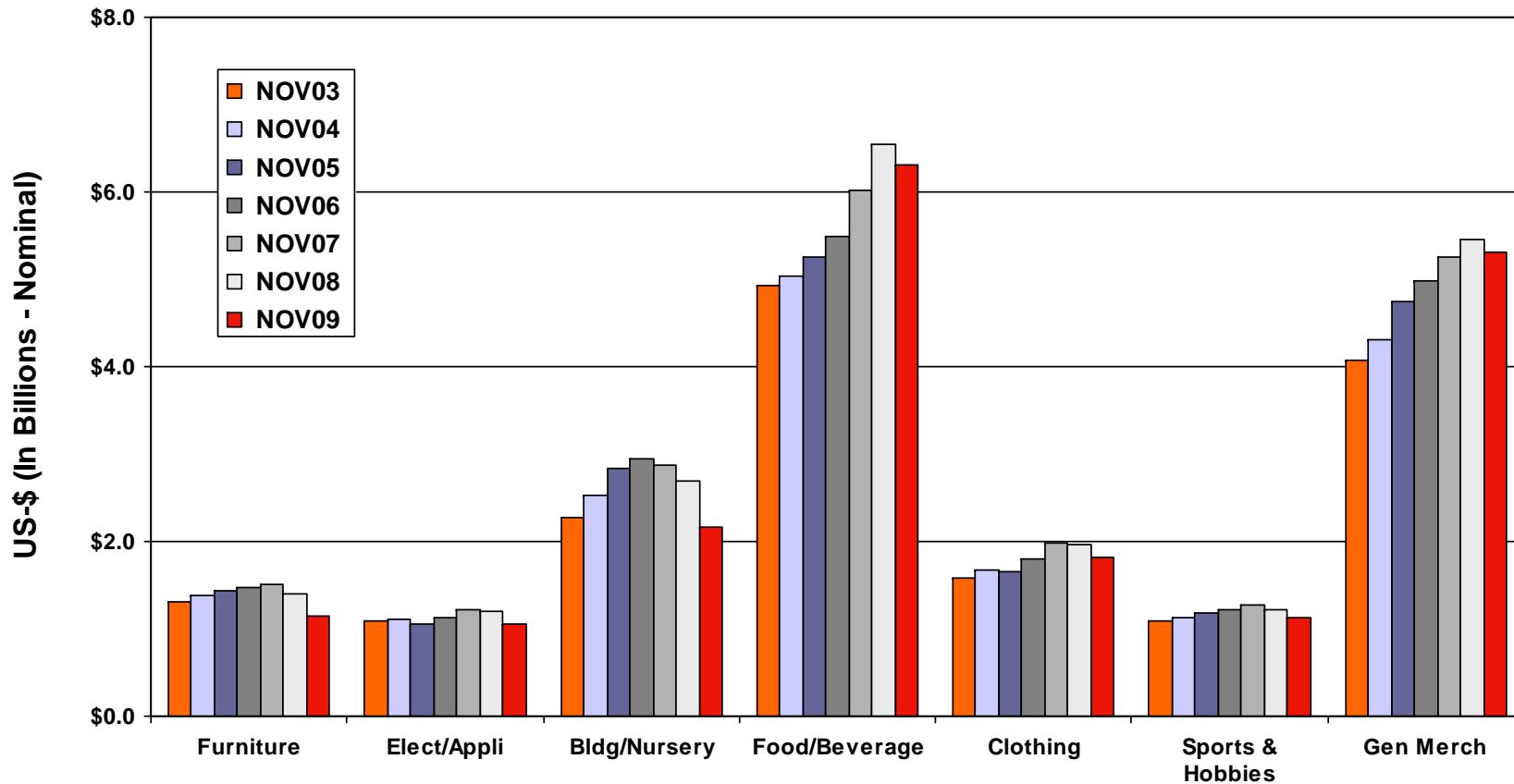


## Nonfarm Industry Sales By County

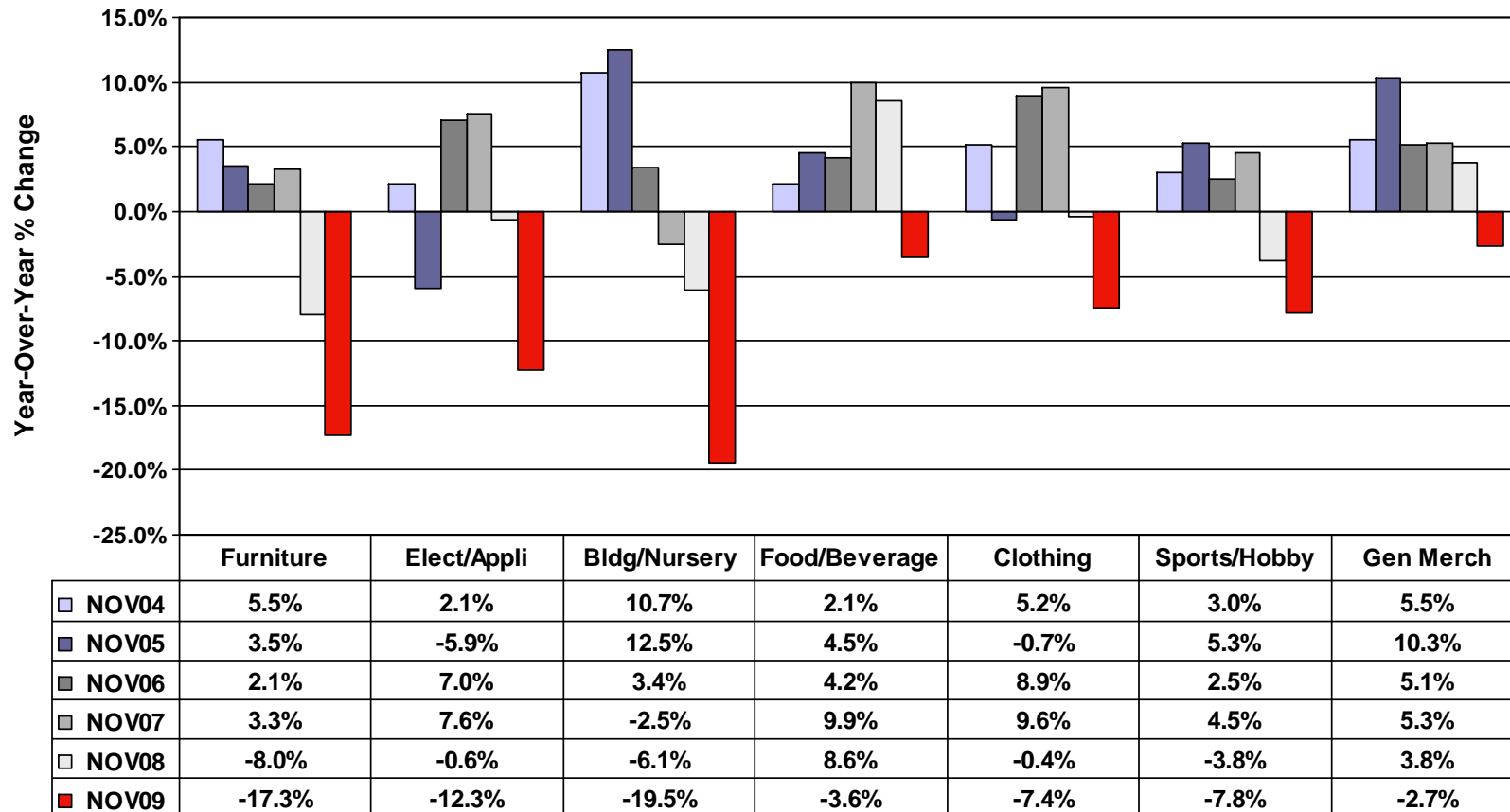
Growth Rates (12 Month Periods Ending November – Excluding Retail)



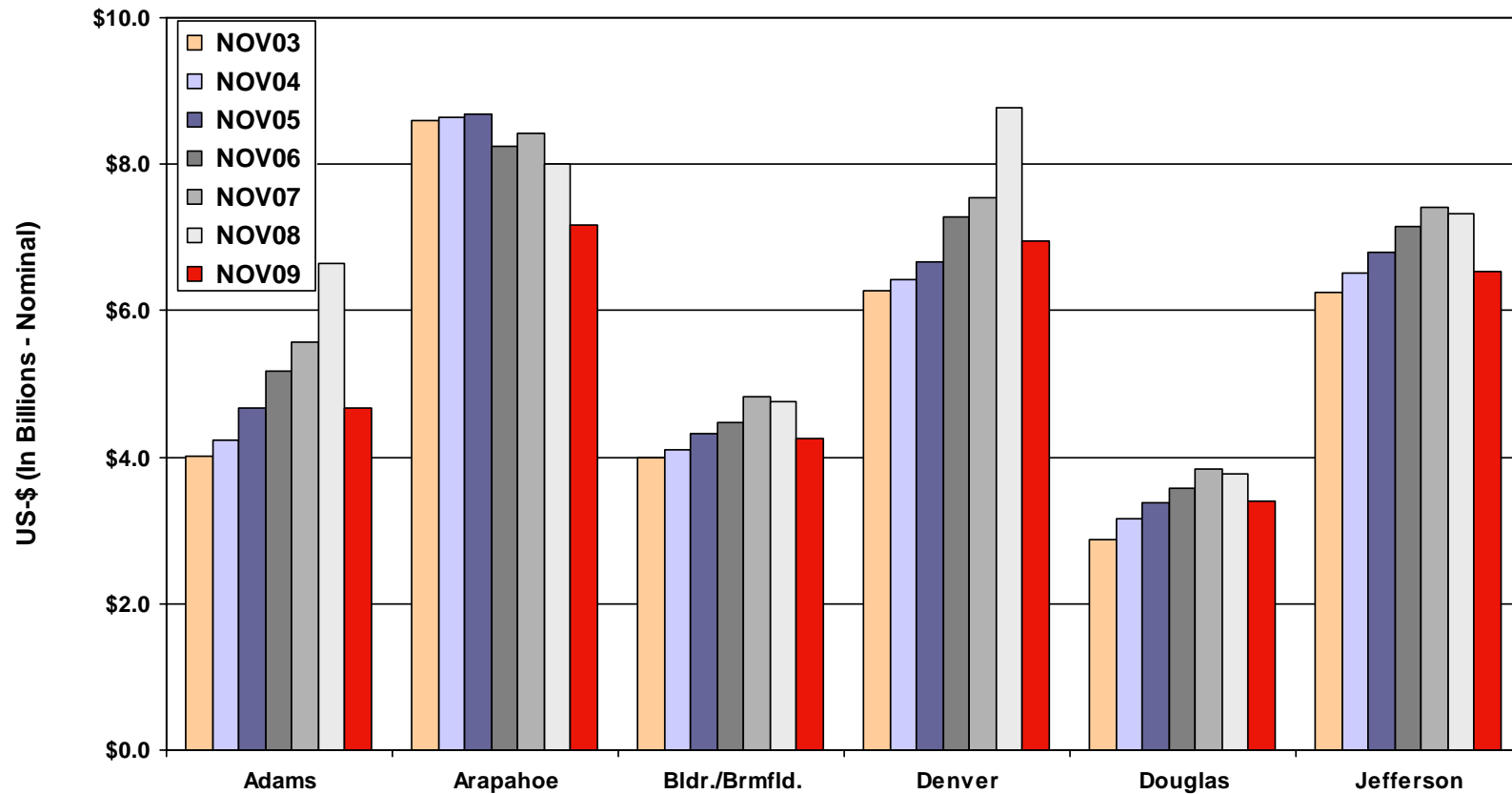
## Denver-Aurora MSA Retail Sales (12 Month Periods Ending November)



## Denver-Aurora MSA Retail Sales Growth Rates (12 Month Periods Ending November)

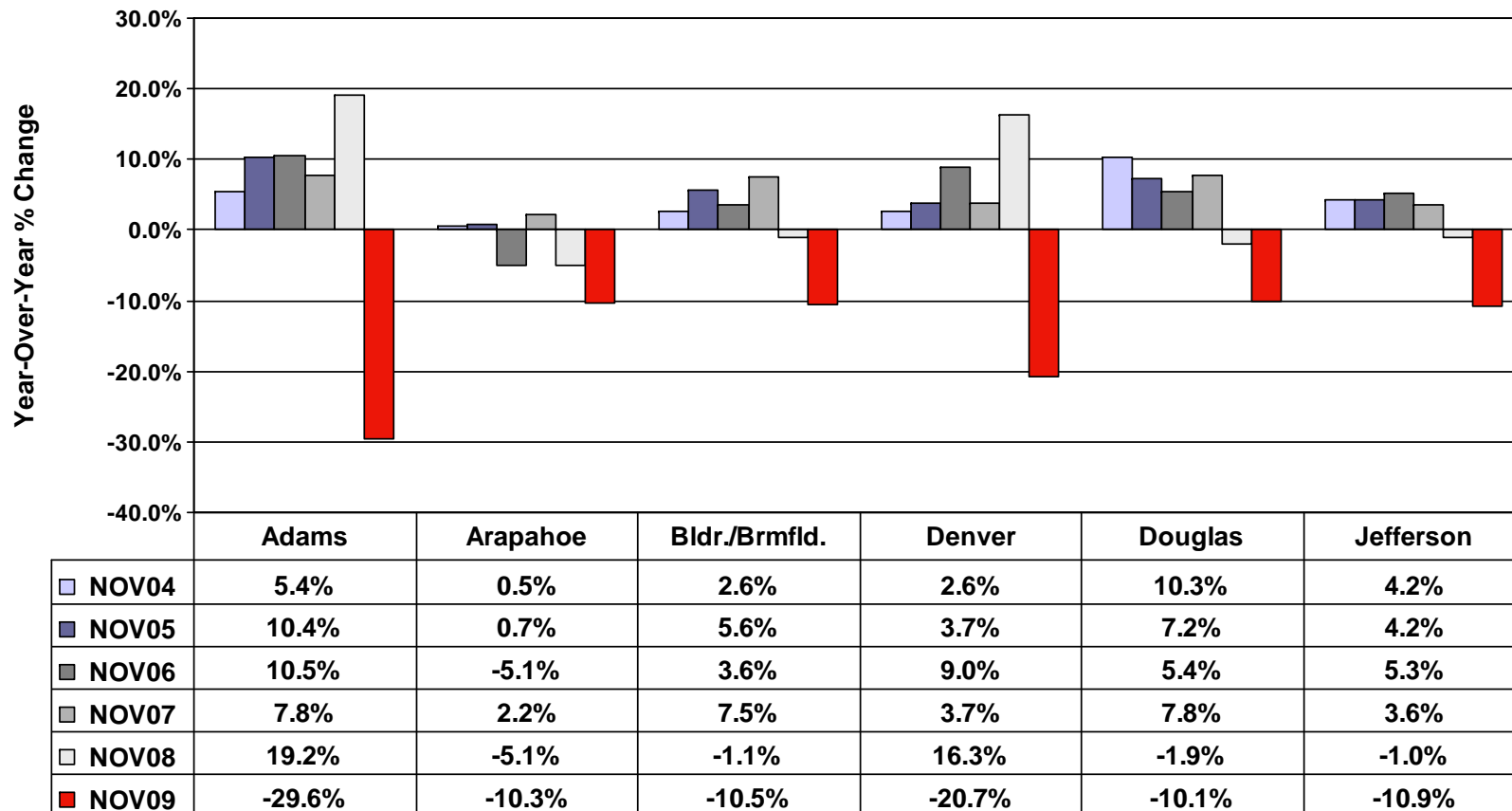


## Retail Sales By County (12 Month Periods Ending November)

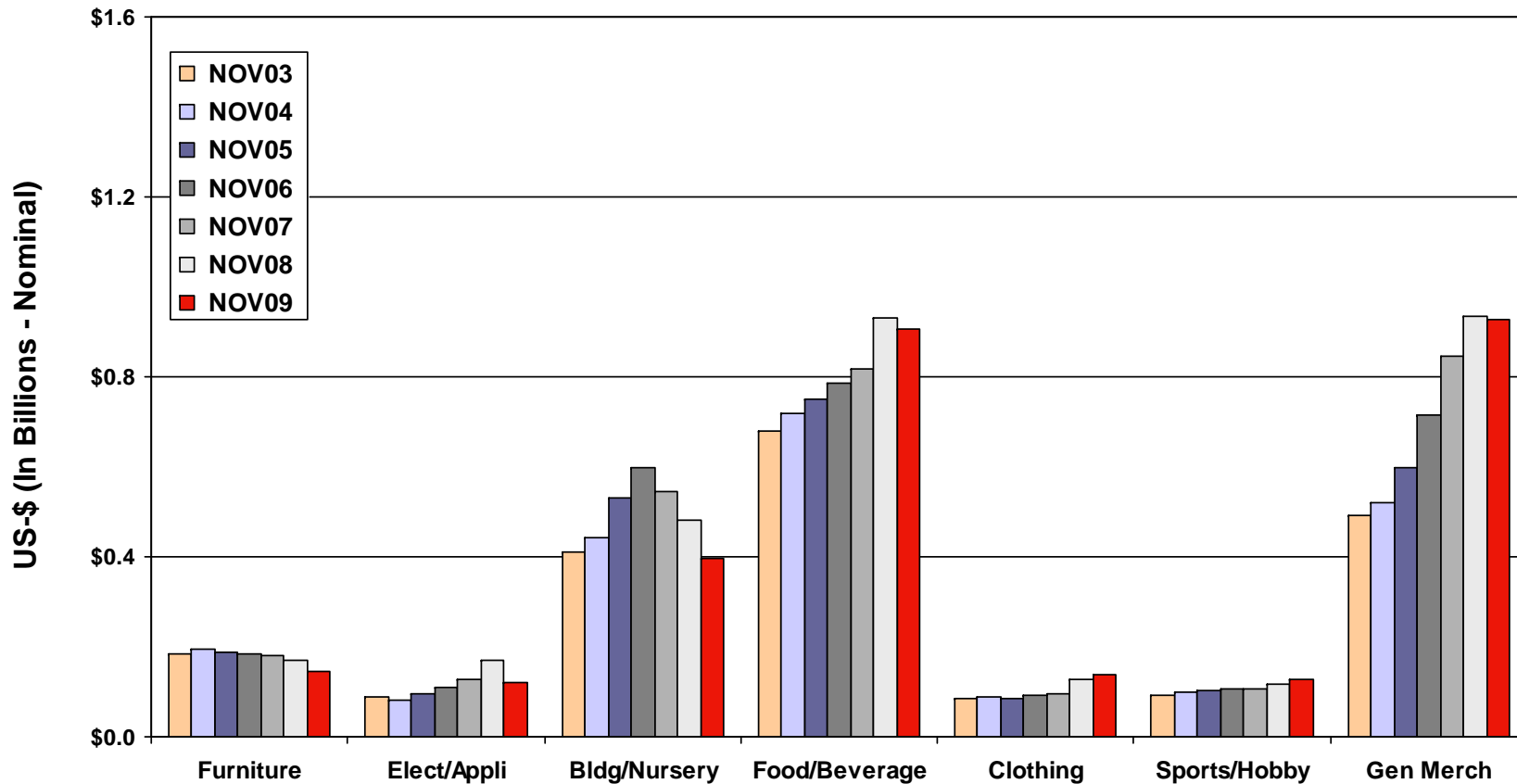


## Retail Sales By County

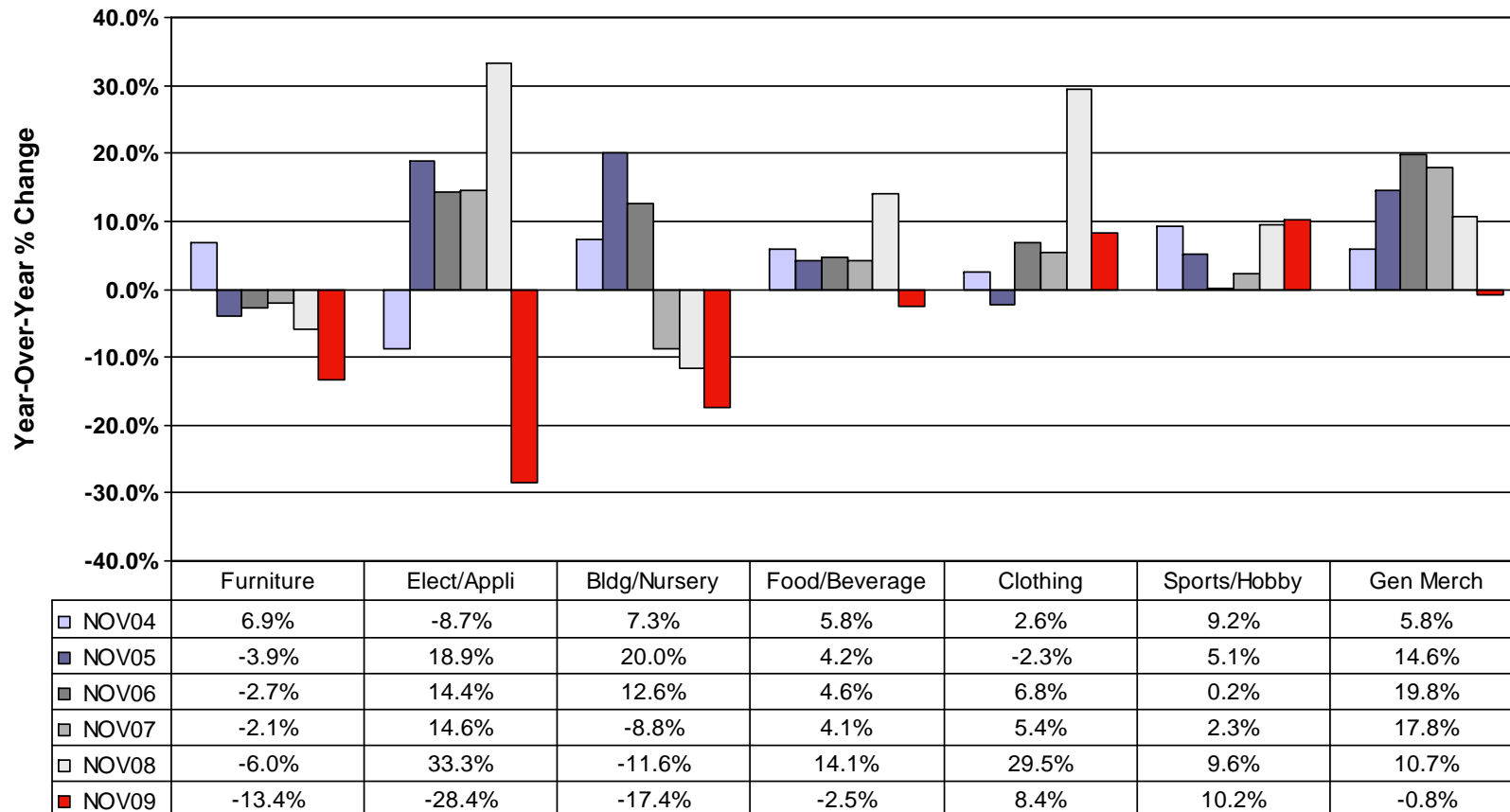
Growth Rates (12 Month Periods Ending November)



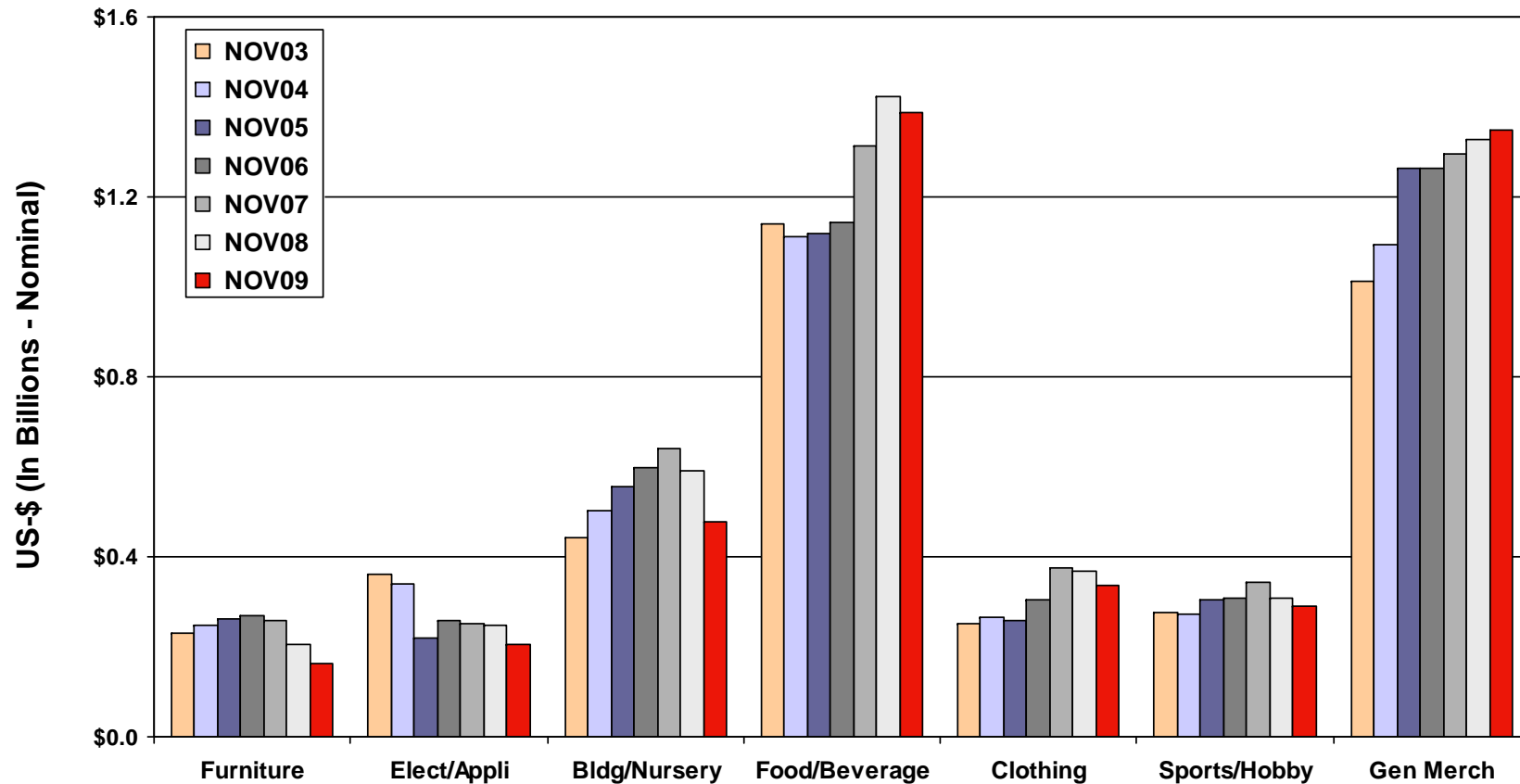
## Adams County Retail Sales (12 Month Periods Ending November)



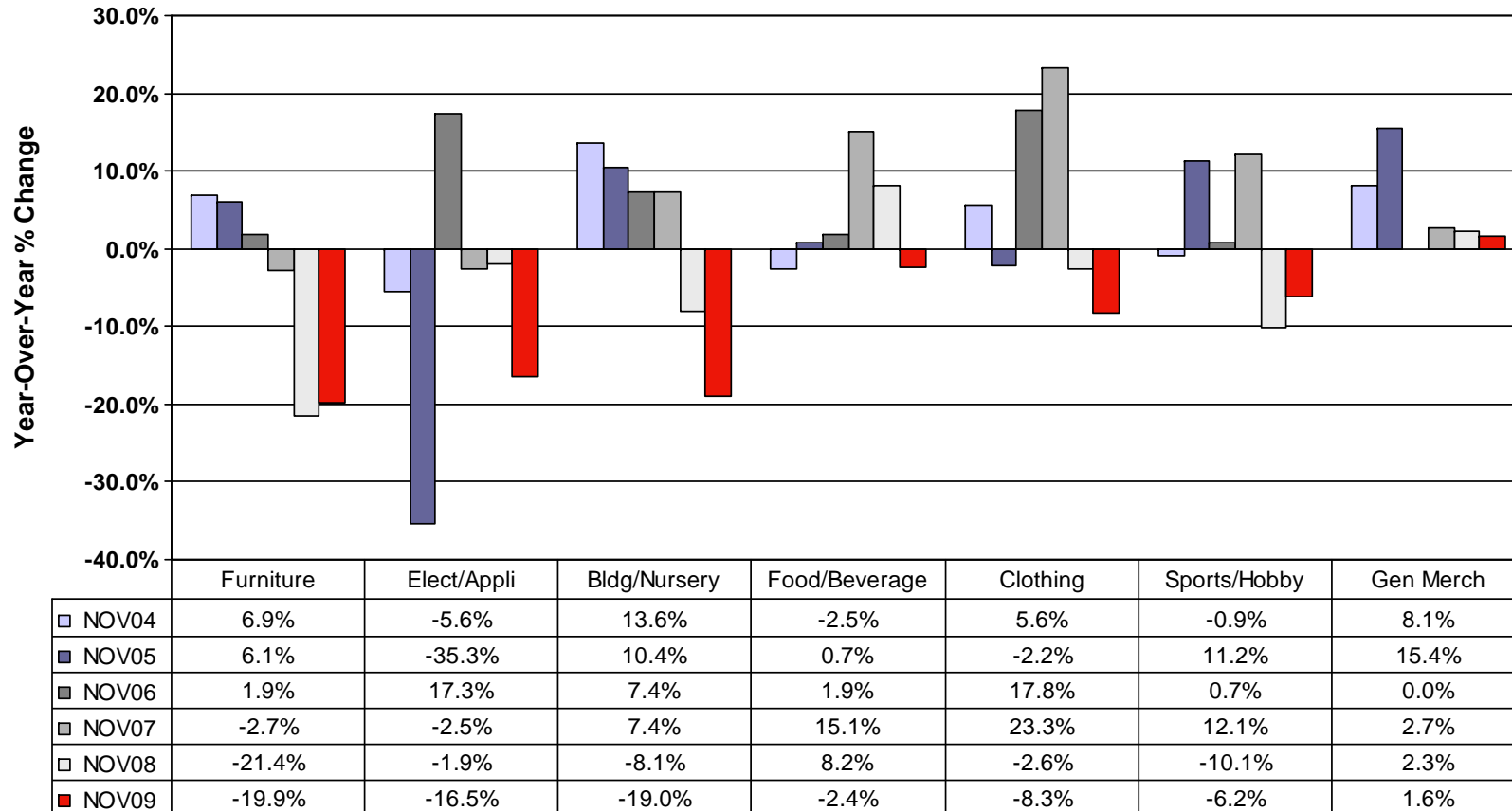
## Adams County Retail Sales Growth Rates (12 Month Periods Ending November)



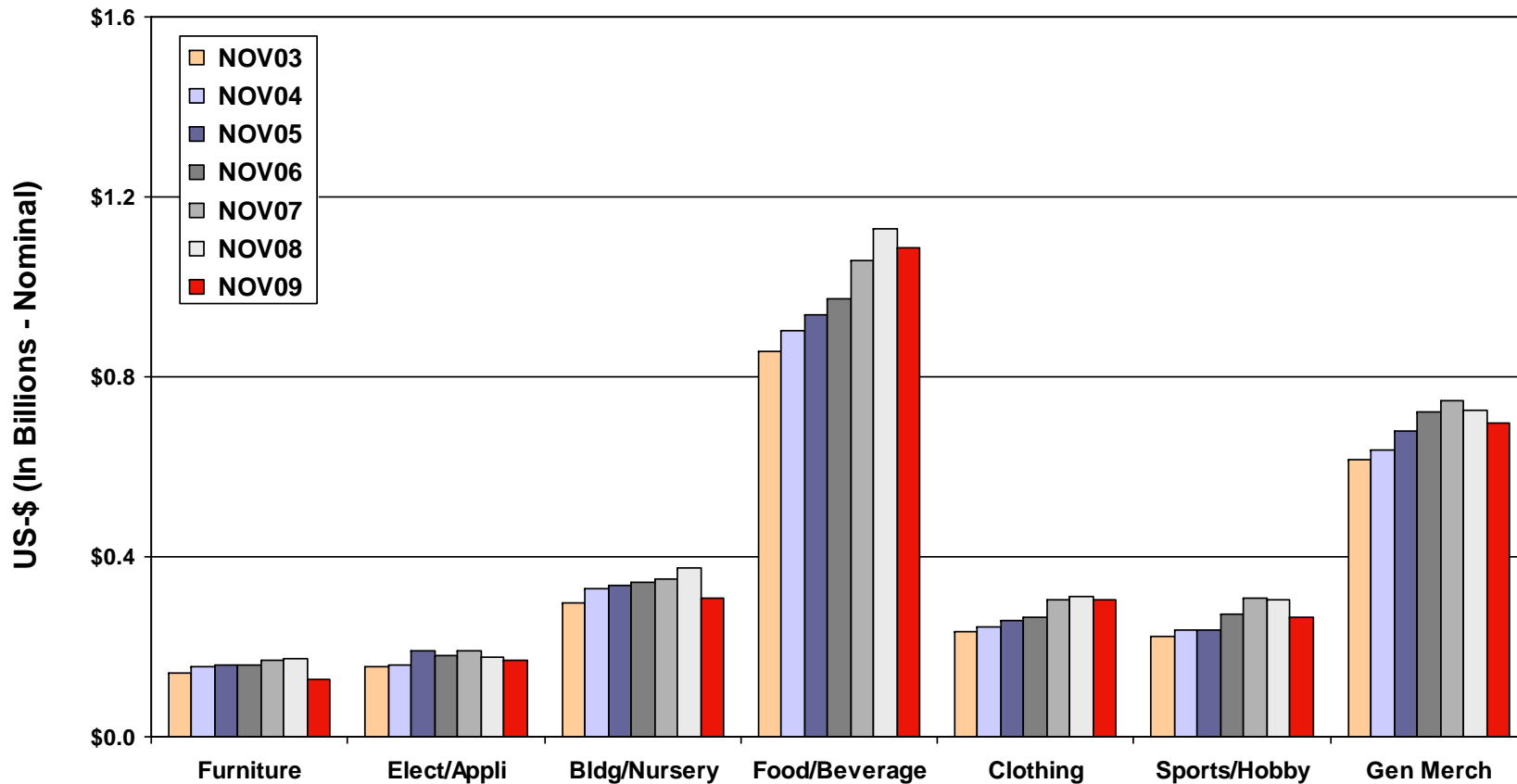
## Arapahoe County Retail Sales (12 Month Periods Ending November)



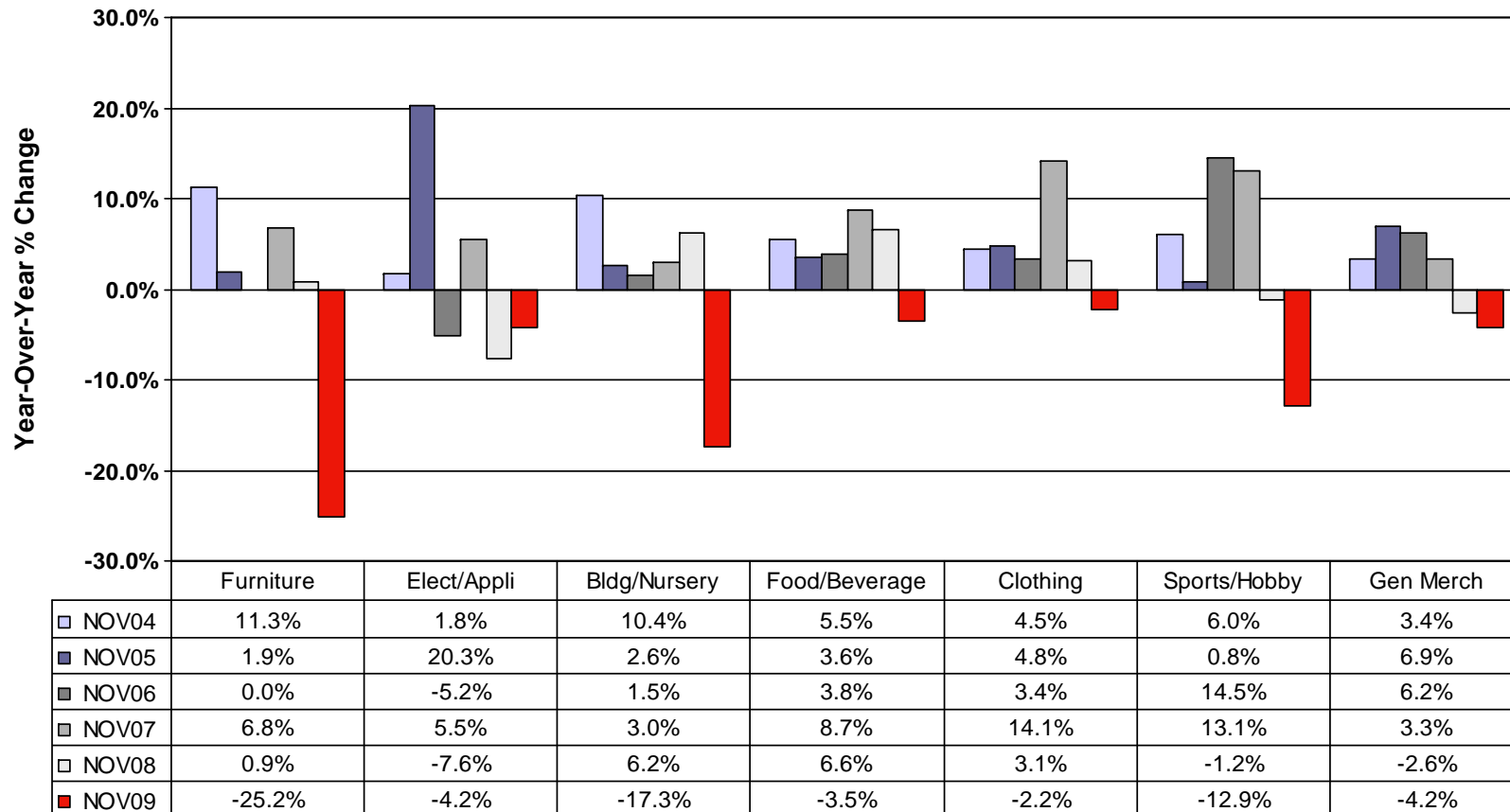
## Arapahoe County Retail Sales Growth Rates (12 Month Periods Ending November)



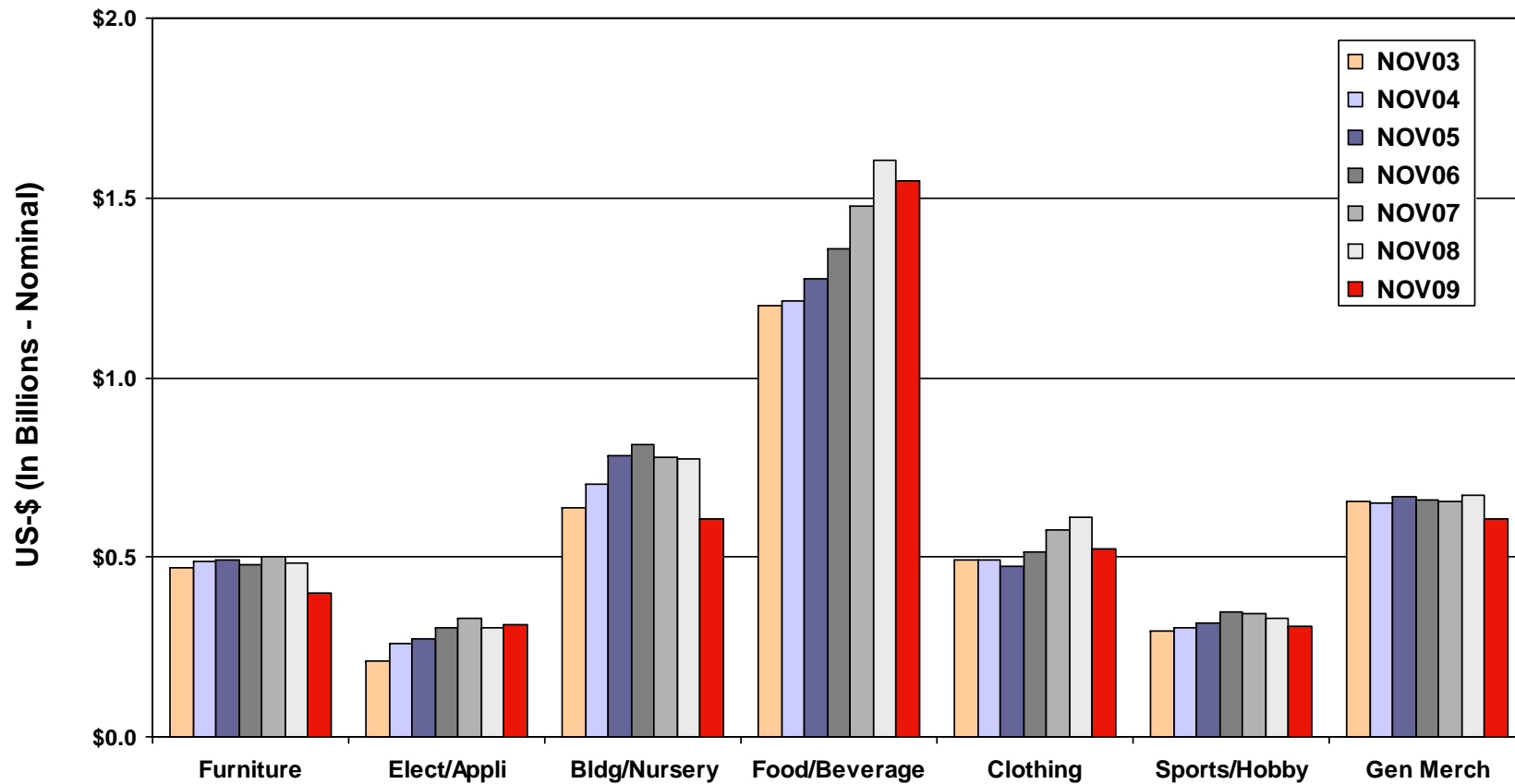
## Boulder/Broomfield County Retail Sales (12 Month Periods Ending November)



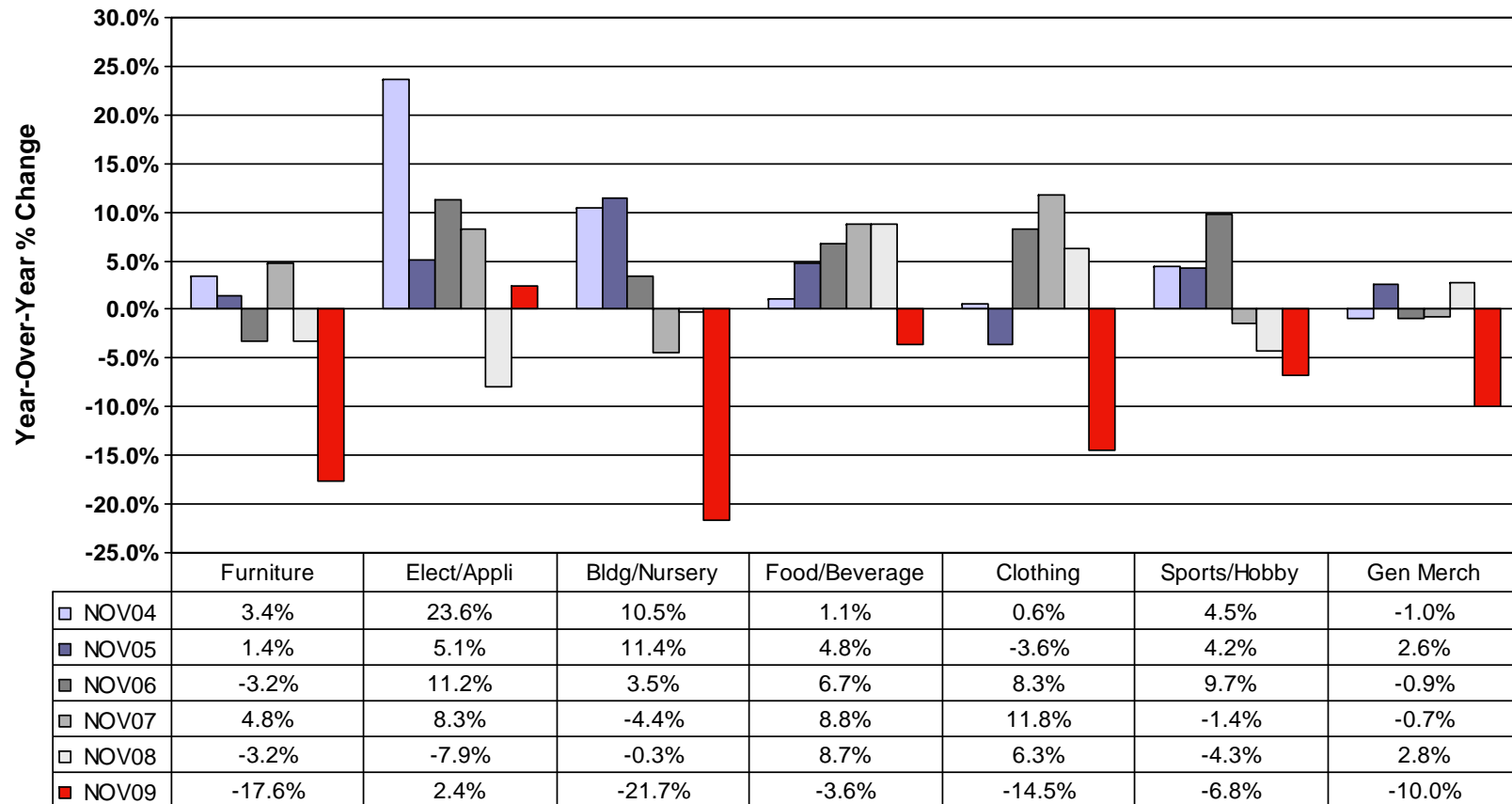
## Boulder/Broomfield County Retail Sales Growth Rates (12 Month Periods Ending November)



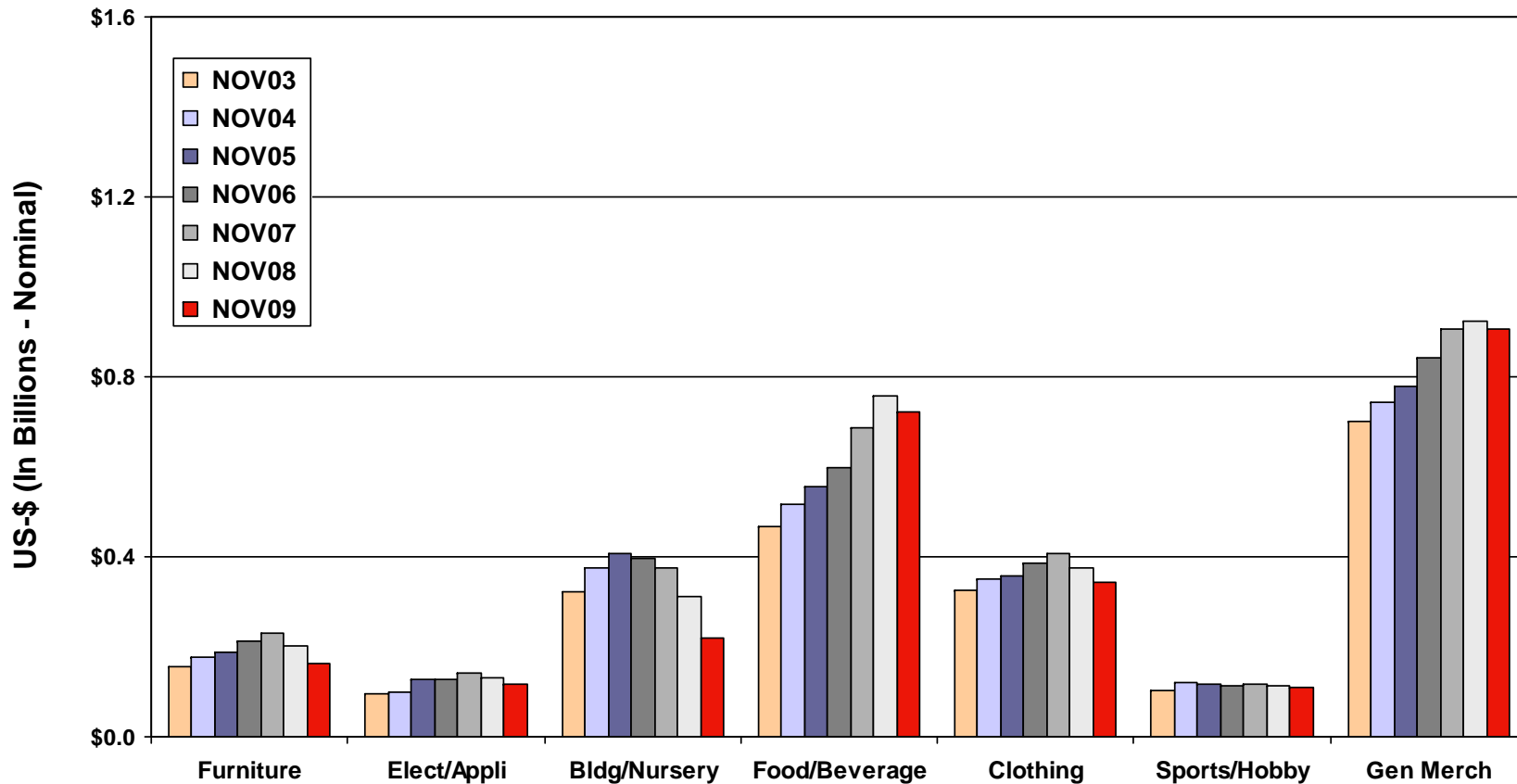
## Denver County Retail Sales (12 Month Periods Ending November)



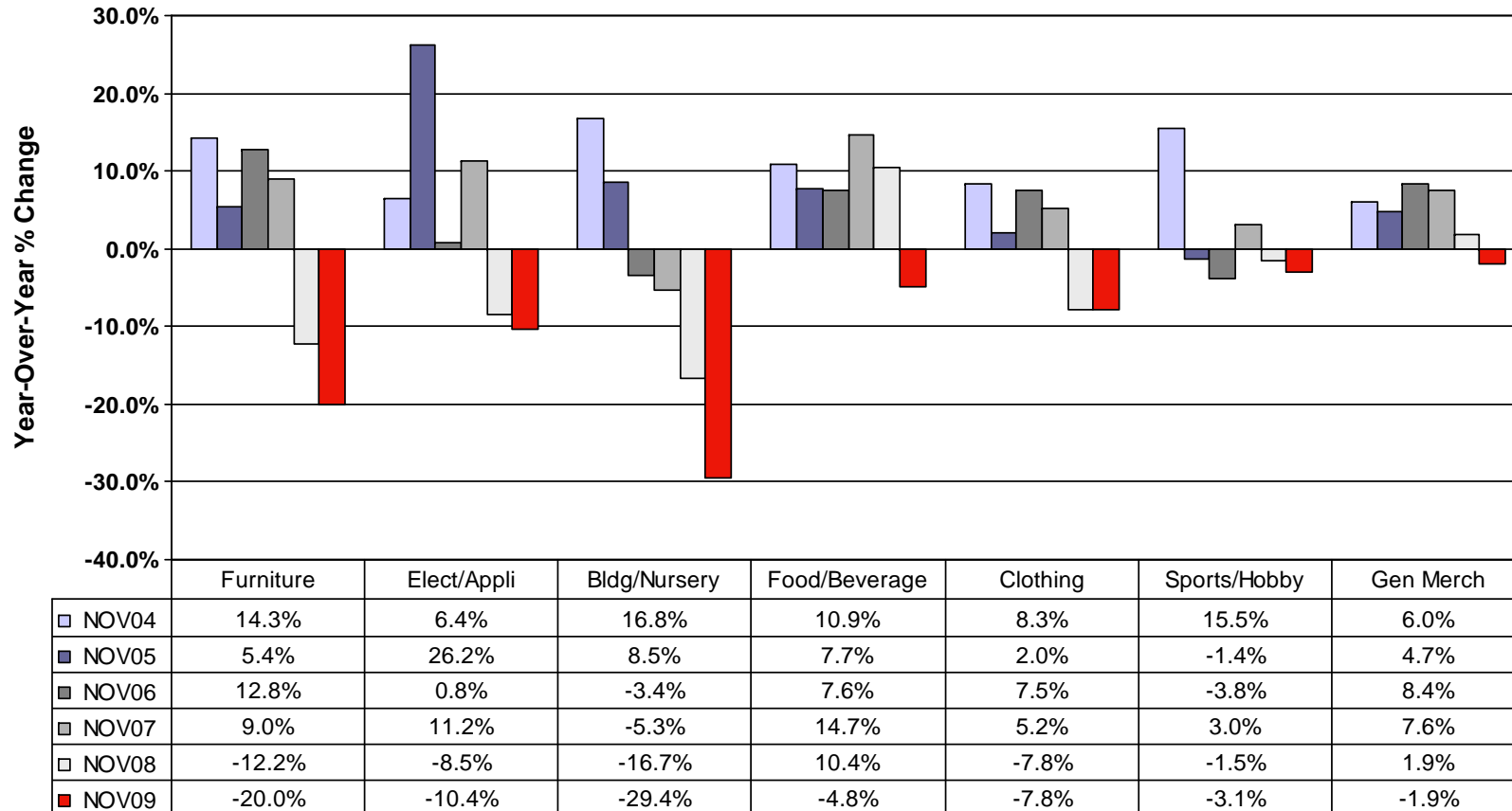
## Denver County Retail Sales Growth Rates (12 Month Periods Ending November)



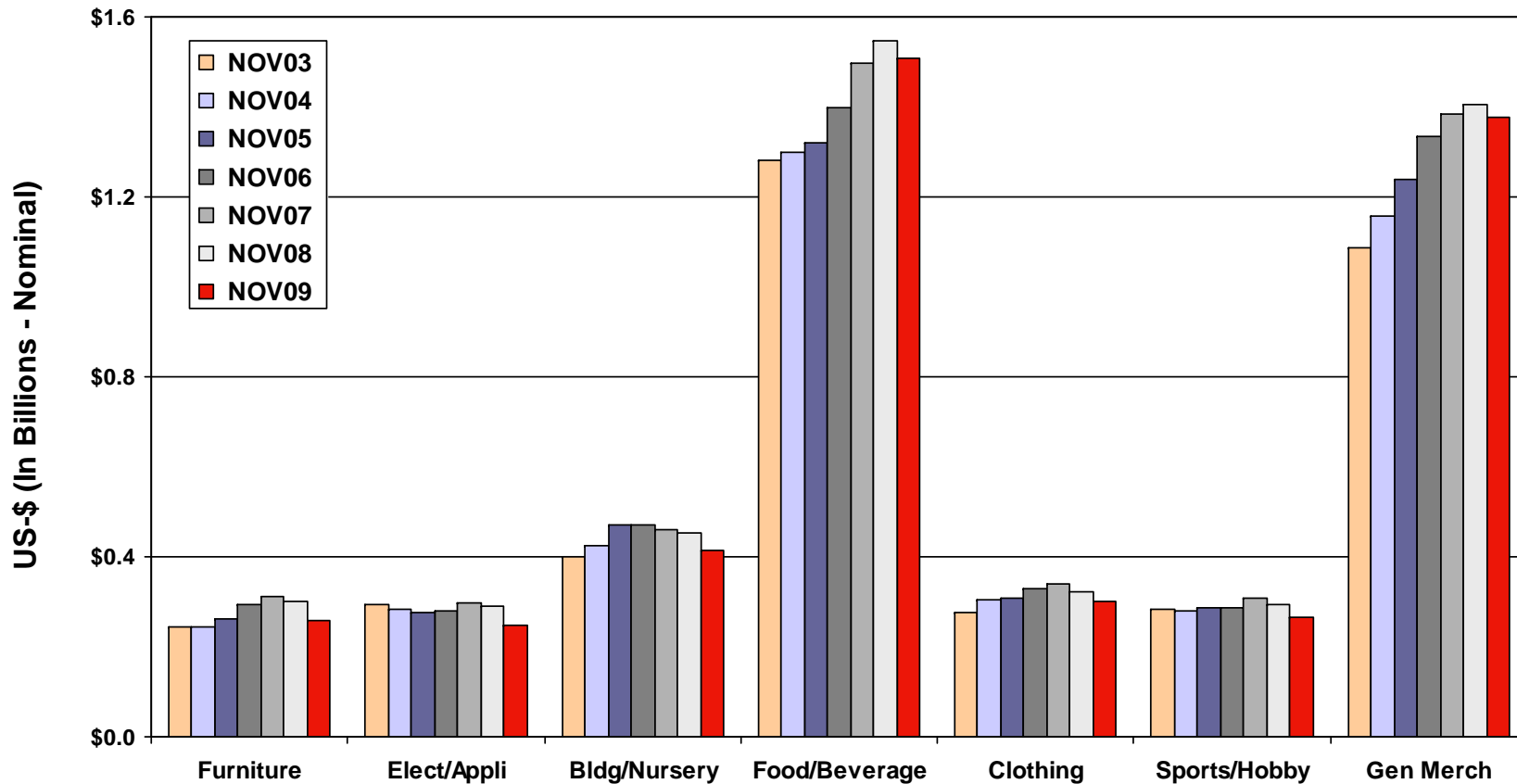
## Douglas County Retail Sales (12 Month Periods Ending November)



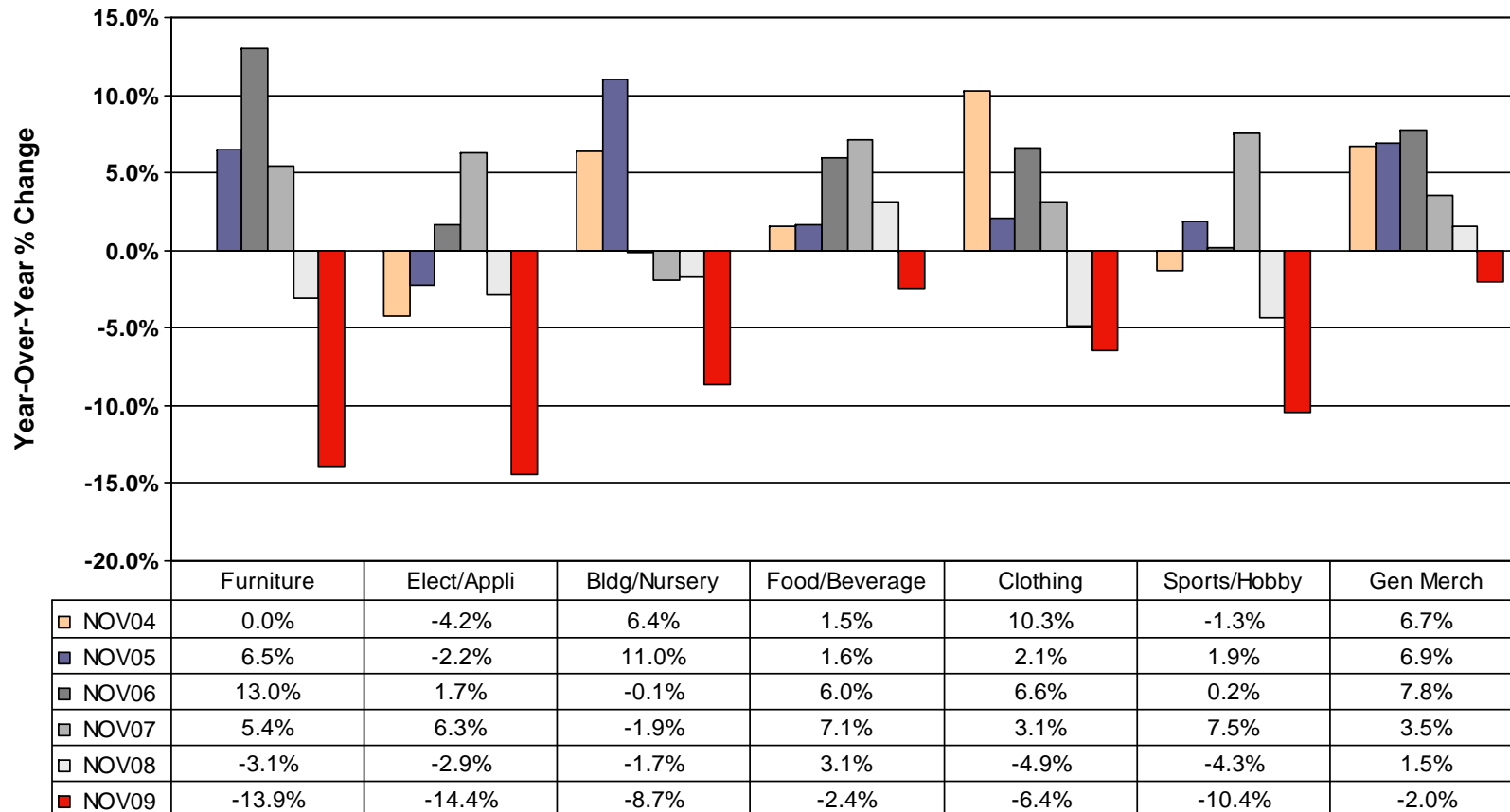
## Douglas County Retail Sales Growth Rates (12 Month Periods Ending November)



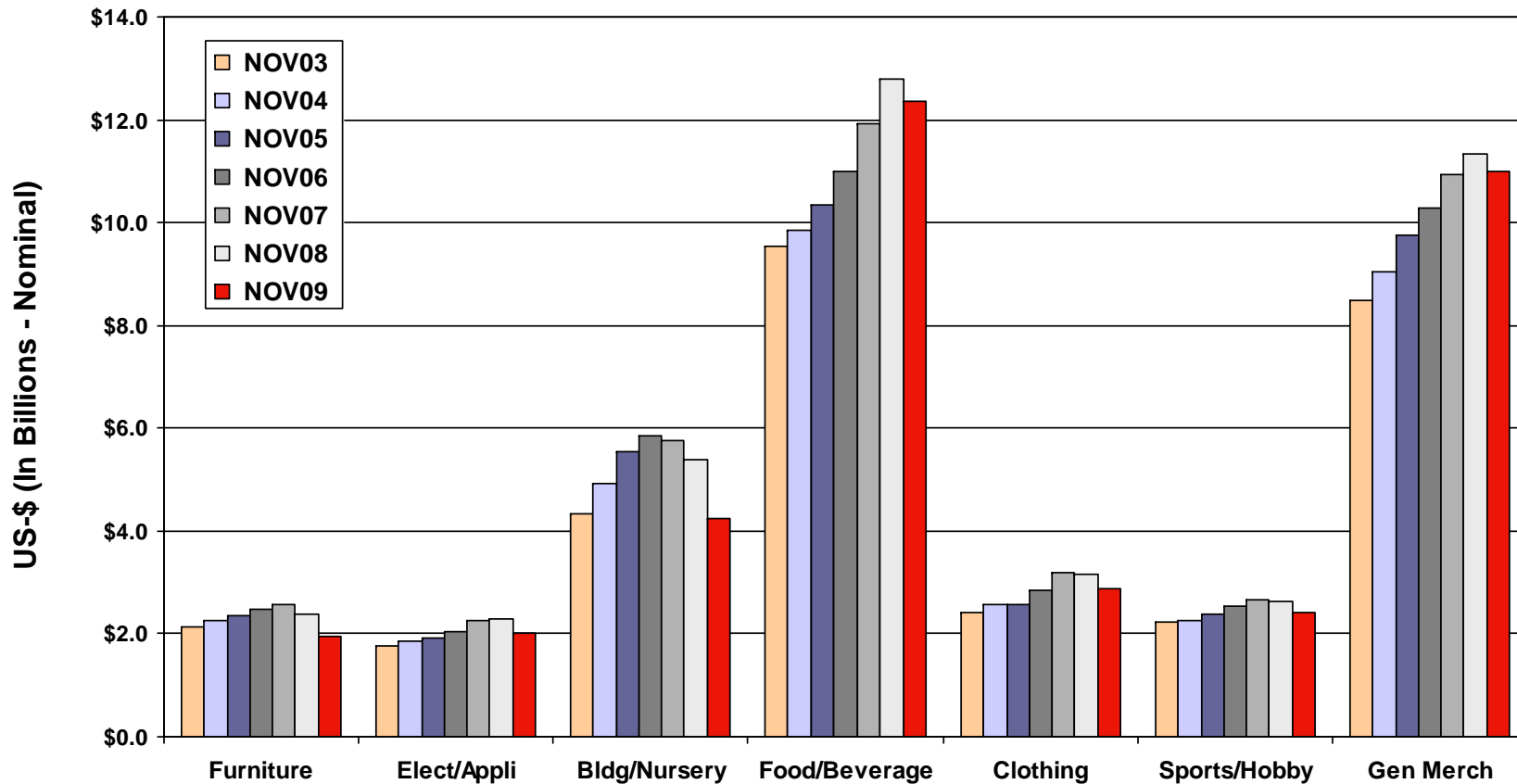
## Jefferson County Retail Sales (12 Month Periods Ending November)



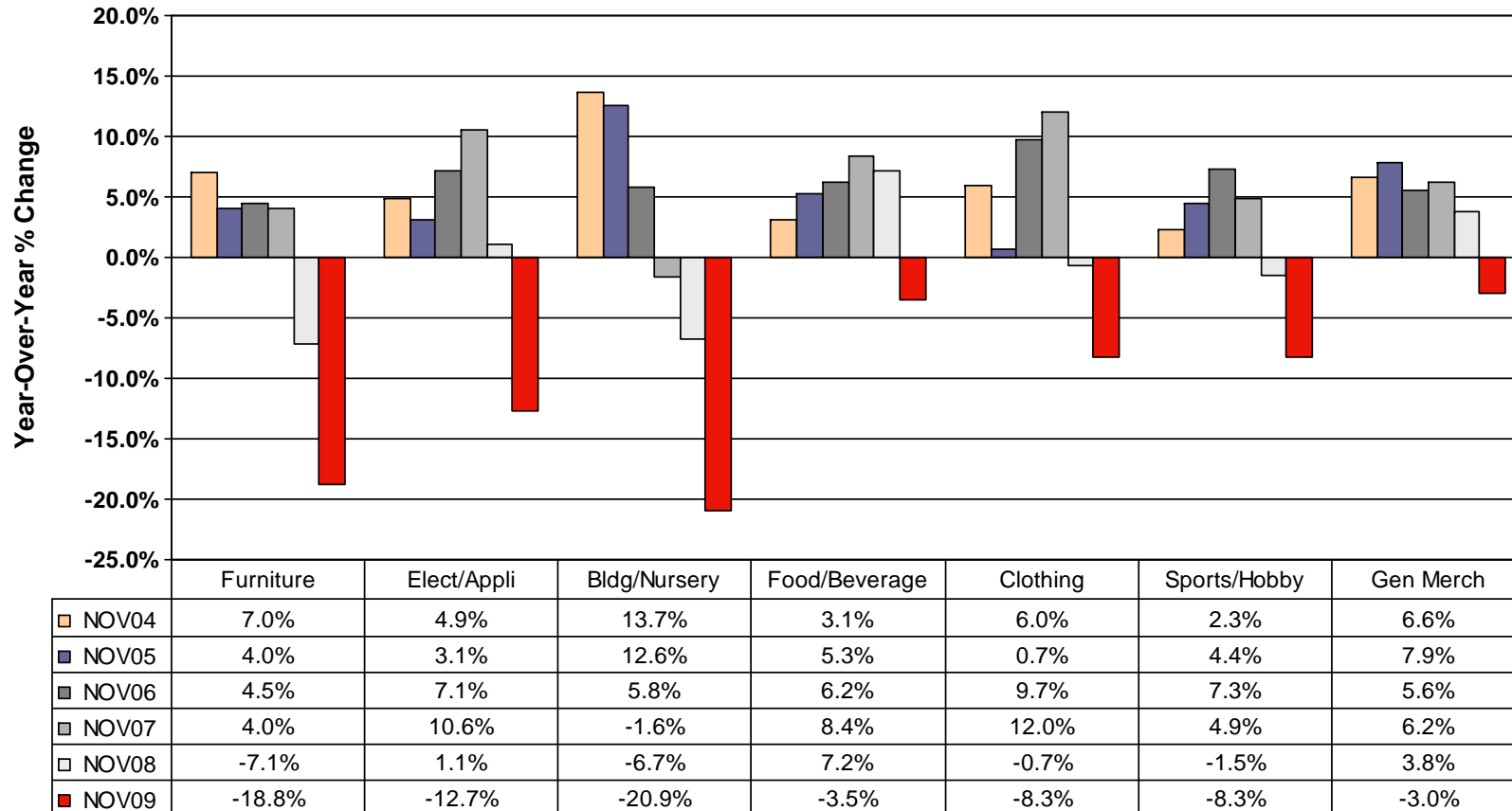
## Jefferson County Retail Sales Growth Rates (12 Month Periods Ending November)



## State of Colorado Retail Sales (12 Month Periods Ending November)



## State of Colorado Retail Sales Growth Rates (12 Month Periods Ending November)



## Denver-Aurora MSA Industry Sales Growth

